

PROJECT: \_\_\_\_\_  
 CATALOG #: \_\_\_\_\_  
 FIXTURE TYPE: \_\_\_\_\_  
 NOTES: \_\_\_\_\_

## TS Industrial Strip Gen 1 & 2



The *TS Industrial Strip Gen 1 & 2* provide higher delivered lumens, greater energy efficiency, and reliable fixture performance for industrial and commercial applications.

### APPLICATIONS

Warehouses, Retail stores, and Fabrication areas, etc.

### REPLACEMENT

1 Lamp T8 32W, 2 Lamp T8 32W, 3 Lamp T8 32W,  
4 Lamp T8 32W, 2 Lamp T5HO 54W

## SPECIFICATIONS

### HOUSING

Body consists of fabricated 22ga steel

### AMBIENT TEMPERATURE

Suitable for use in -40°C to 40°C (-40°F to 104°F)

### MOUNTING

Surface mount, Chain mount, Wire Guards and Row Connector for TS G1 only

### EFFICACY

Up to 132 lumens per watt (see individual wattage data)

### CCT AND CRI

4000K and 5000K CCT available; 80 CRI

### OPTICS

Frosted acrylic lens.



## PERFORMANCE INFORMATION

SERIES NUMBER	WATT	LUMENS	CCT
TS 4 29 G1 4K	23W	2,990	4000K
TS 4 29 G1 5K	23W	2,989	5000K
TS 4 46 G1 4K	35W	4,620	4000K
TS 4 46 G1 5K	35W	4,690	5000K
TS 8 59 G1 4K	46W	5,980	4000K
TS 8 59 G1 5K	46W	6,026	5000K
TS 8 85 G1 4K	65W	8,580	4000K
TS 8 85 G1 5K	65W	8,645	5000K
TS 8 97 G1 4K	75W	9,750	4000K
TS 8 97 G1 5K	75W	9,825	5000K
TS 4 60 G2 4K	45W	6,100	4000K
TS 4 60 G2 5K	45W	6,050	5000K
TS 8 80 G2 4K	60W	8,379	4000K
TS 8 80 G2 5K	60W	8,000	5000K
TS 8 100 G2 4K	80W	10,333	4000K
TS 8 100 G2 5K	80W	10,550	5000K

*Specifications continued on Page 2*

Due to continuous product improvements, specification and/or equipment updates may change without notice.

## SPECIFICATIONS CONTINUED

### WARRANTY

5-year limited warranty on TS G1.  
10-year limited warranty on TS G2. Comprehensive warranty terms can be located on [www.slgus.com](http://www.slgus.com).

### ELECTRICAL

High quality constant-current drivers rated for 50/60Hz operation, 120-277V input. Standard 0-10V dimmer.

### ENERGY DATA

Power factor above 90%.

### OPTIONS



HBP-112-L7-OEM



HBP-212-L7-W



EL UNV 1



WG-TS 4 G1

### FINISH

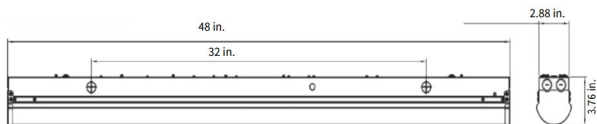
White Polyester Powder coat with 88% reflectivity, painted after fabrication.

### CERTIFICATIONS

UL Listed for damp and dry locations. FCC compliant. RoHs compliant. Design Lights Consortium® (DLC) Premium qualified product. Some product models may not be DLC qualified. Please check the DLC Qualified Products List at [www.slgus.com/DLC](http://www.slgus.com/DLC).

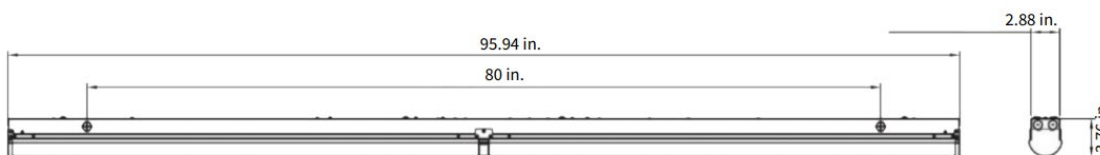
ORDERING GUIDE			EXAMPLE: TS 4 40 G2 5K				
Luminaire Type	Size	Lumen Output	Generation	Voltage	CCT	Finish	Options
TS Industrial Strip	4= 4 ft	29 2,990 Lumens	G1	BLANK= 120-277V	4K 4000K 5K 5000K	BLANK= White	BLANK=No Option  M1(HBP-112-L7-OEM)=High/Low-Bay PIR On/Off Sensor M2(HBP-212-L7-W)=High Bay Sensor, Cont Dimming EL UNV 1=Emergency Backup Kit RC-TS G1=Row connector WG-TS 4 G1=4 ft wire guards for TS G1
		46 4,620 Lumens					
		60 6,000 Lumens	G2				
	8= 8 ft	59 5,980 Lumens	G1				
		85 8,580 Lumens					
		97 9,750 Lumens					
		80 8,000 Lumens	G2				
		100 10,500 Lumens					

## DIMENSIONS



TS 4 ft

Weight  
30W: 8 LB  
45W: 6.23 LB



TS 8 ft

Weight  
60W: 13.6 LB  
80W: 13.8 LB

Due to continuous product improvements, specification and/or equipment updates may change without notice.

## OPTIONS



M1 (HBP-112-L7-OEM)

High/Low-Bay PIR On/Off Sensor

The **HBP-112-L7-OEM** on/off PIR motion sensor ideal for for warehouses, distribution centers, gymnasiums, and other indoor applications.

Operation Voltage	Mounting Height	Coverage	Shape	Adjustable Time Delay	Operating Temperature	Applications
120V/ 277V/ 347V	15-40 ft	2.5x Height*	Cone	5/10/15/20/30 min. Default 15 min.	0°C to 70°C 32°F to 158°F	Indoor Only

\*Covers a 100 ft diameter when the mounting height is 40 ft.



M2 (HBP-212-L7-W)

High Bay Sensor, Cont Dimming

The **HBP-212-L7-W** is designed for indoor high bay or low bay applications.

**Mode A** Traditional on/off motion sensor.

**Mode B** Continuous dimming. Turn off when the desired ambient light is reached.

**Mode C** Continuous dimming. Dim the lights down to minimum desired light level.

**Mode D** Continuous dimming. Set different light level for daytime and nighttime.

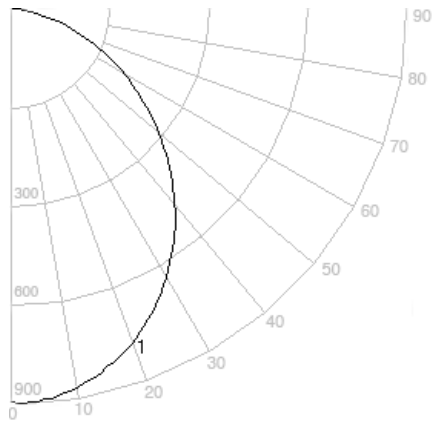
**Mode E** Service and setup mode. Adjust time delays and desired light levels.

Operation Voltage	Mounting Height	Coverage	Shape	Adjustable Time Delay	Operating Temperature	Applications
120/277V	15-40 ft	2.5x Height*	Cone	30 sec - 30 min (default 15 min)	0°C to 70°C 32°F to 158°F	Indoor Only

\*Covers a 100 ft diameter when the mounting height is 40 ft.

Due to continuous product improvements, specification and/or equipment updates may change without notice.

## PHOTOMETRIC



TS 4 46 G1 4K

## ELECTRICAL LOAD

Series Number	Wattage	Current (A)			
		120V	208V	240V	277V
TS 4 29 G1 5K	23W	0.19	0.11	0.10	0.08
TS 4 46 G1 5K	35W	0.29	0.17	0.15	0.13
TS 8 59 G1 5K	46W	0.38	0.22	0.19	0.16
TS 8 85 G1 5K	65W	0.54	0.31	0.27	0.16
TS 8 97 G1 5K	75W	0.63	0.36	0.31	0.27
TS 4 60 G2 5K	45W	0.38	0.22	0.19	0.16
TS 8 80 G2 5K	60W	0.50	0.29	0.25	0.22
TS 8 100 G2 5K	80W	0.67	0.38	0.33	0.29

Due to continuous product improvements, specification and/or equipment updates may change without notice.