



# T8

## 16.5T8/MAS/48-835/MF24/P/DIM 25/1

Our TLEDs are available in InstantFit (Type A / Type C) or MainsFit (Ballast bypass / Type B) versions. The InstantFit lamps work on a broad variety of ballasts and LED drivers. Only InstantFit has over 15,000 lamp & ballast combinations delivering even light output, energy savings and a long lifetime. Our MainsFit products feature a double-ended design, simplifying installation while a proprietary safety circuit minimizes a shock risk. Lamp sizes range from 2-foot to 8-foot and U-bend with a variety of lumen outputs.

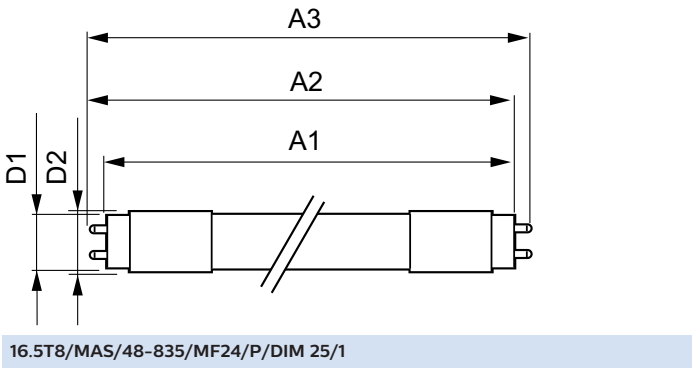
### Product data

<b>General information</b>		<b>Power (Rated) (Nom)</b>	16.5 W
Base	G13 [ Medium Bi-Pin Fluorescent]	<b>Lamp Current (Max)</b>	144 mA
EU RoHS compliant	Yes	<b>Lamp Current (Min)</b>	68 mA
Nominal Lifetime (Nom)	70000 h	<b>Starting Time (Nom)</b>	0.5 s
Switching Cycle	50000X	<b>Warm Up Time to 60% Light (Nom)</b>	0.5 s
Tier	MasterClass	<b>UL Type</b>	TLED_Type B; UL classified double end
<b>Light technical</b>		<b>Power Factor (Nom)</b>	0.9
Color Code	835 [ CCT of 3500K]	<b>Voltage (Nom)</b>	120-277 V
Beam Angle (Nom)	180 °	<b>Temperature</b>	
Initial lumen (Nom)	2450 lm	<b>T-Ambient (Max)</b>	113 °F
Color Designation	White (WH)	<b>T-Ambient (Min)</b>	-4 °F
Correlated Color Temperature (Nom)	3500 K	<b>T-Storage (Range)</b>	-40 °C to 65 °C
Luminous Efficacy (rated) (Nom)	148.00 lm/W	<b>T-Storage (Max)</b>	149 °F
Color Consistency	6SCDM	<b>T-Storage (Min)</b>	-40 °F
Color Rendering Index (Nom)	80	<b>T-Case Maximum (Nom)</b>	158 °F
LLMF At End Of Nominal Lifetime (Nom)	70 %	<b>Controls and dimming</b>	
<b>Operating and electrical</b>		<b>Dimmable</b>	Only with specific dimmers
Input Frequency	50 to 60 Hz		

Mechanical and housing	
Bulb Finish	Frosted
Bulb Material	Plastic
Product Length	47-1/4 in
Bulb Shape	Tube, double-ended
Approval and application	
Energy Saving Product	Yes
Approbation Marks	RoHS compliance UL certificate DLC compliance
Application conditions	
Ambient temperature range	-20 °C to 45 °C

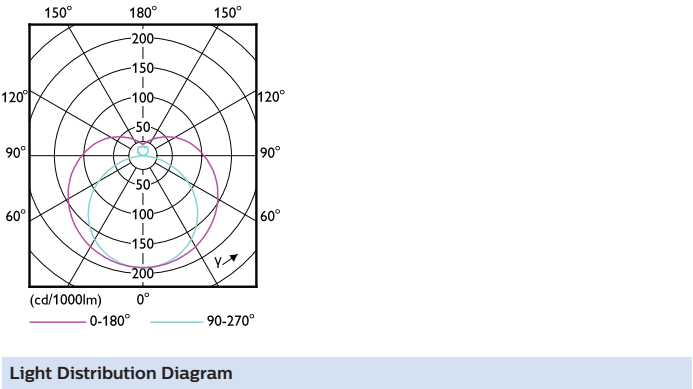
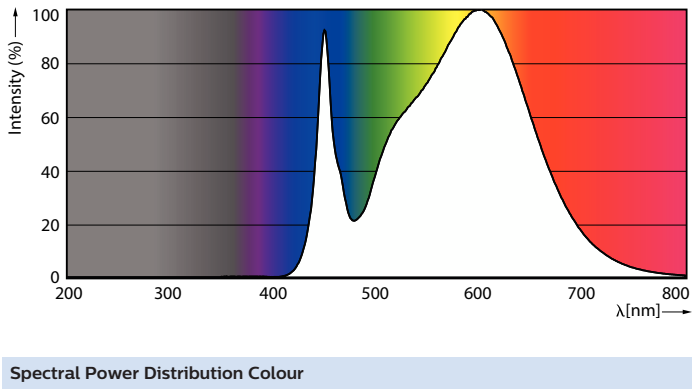
Product data	
Order product name	16.5T8/MAS/48-835/MF24/P/DIM 25/1
EAN/UPC - Product	046677579517
Order code	579516
Numerator - Quantity Per Pack	1
Numerator - Packs per outer box	25
Material Nr. (12NC)	929003525804
Net Weight (Piece)	0.463 lb
Model Number	9290035258

Dimensional drawing

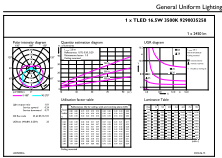


Product	D1	D2	A1	A2	A3
16.5T8/MAS/48-835/MF24/P/DIM 25/1	1-1/16 in	1-1/8 in	47-3/16 in	47-1/2 in	47-3/4 in

Photometric data



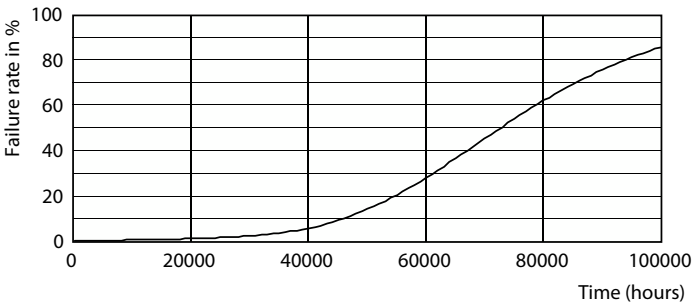
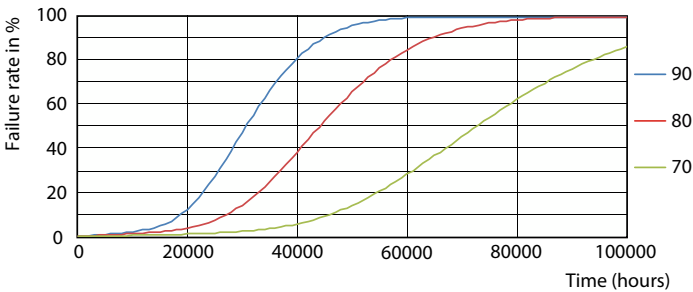
Photometric data



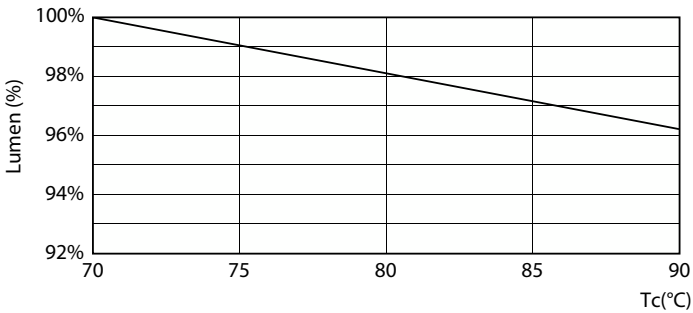
General Uniform Lighting

General uniform lighting

Lifetime

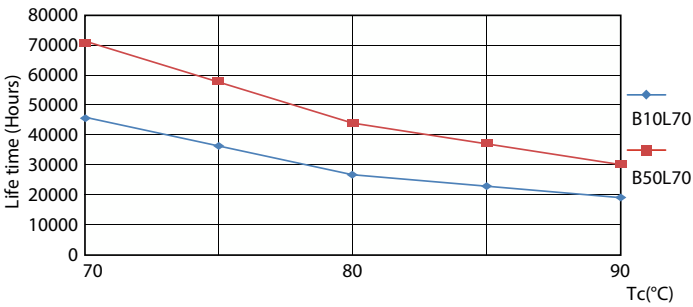


FailureRate



LumenVsTc

Life Expectancy Diagram



LifetimeVsTc

Lifetime



Lumen Maintenance Diagram

