



T8

14T8/COR/48-840/IF22/G/DIM/BAA 25/1

Our TLEDs are available in InstantFit (Type A / Type C) or MainsFit (Ballast bypass / Type B) versions. The InstantFit lamps work on a broad variety of ballasts and LED drivers. Only InstantFit has over 15,000 lamp & ballast combinations delivering even light output, energy savings and a long lifetime. Our MainsFit products feature a double-ended design, simplifying installation while a proprietary safety circuit minimizes a shock risk. Lamp sizes range from 2-foot to 8-foot and U-bend with a variety of lumen outputs.

Product data

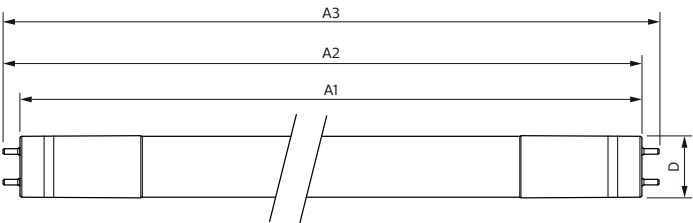
General information	
Base	G13 [Medium Bi-Pin Fluorescent]
EU RoHS compliant	Yes
Nominal Lifetime (Nom)	50000 h
Switching Cycle	50000
Buy American Compliant Products	Yes
Tier	CorePro
Light technical	
Color Code	841 [CCT of 4100K (841)]
Beam Angle (Nom)	240 °
Initial lumen (Nom)	2200 lm
Color Designation	Cool White (CW)
Correlated Color Temperature (Nom)	4000 K
Luminous Efficacy (rated) (Nom)	157.00 lm/W
Color Consistency	<6
Color Rendering Index (Nom)	80
LLMF At End Of Nominal Lifetime (Nom)	70 %

Operating and electrical	
Input Frequency	20K to 120K Hz
Power (Rated) (Nom)	14 W
Lamp Current (Max)	400 mA
Lamp Current (Min)	100 mA
Wattage Equivalent	32-30-28-25 W
Starting Time (Nom)	0.5 s
Warm Up Time to 60% Light (Nom)	0.5 s
UL Type	TLED_Type A; UL listed HF
Power Factor (Nom)	0.9
Voltage (Nom)	120-277, 347 V
Temperature	
T-Ambient (Max)	113 °F
T-Ambient (Min)	-4 °F
T-Storage (Range)	-40 °C to 65 °C
T-Storage (Max)	149 °F
T-Storage (Min)	-40 °F
T-Case Maximum (Nom)	122 °F

Controls and dimming	
Dimmable	Only with specific dimmers
Mechanical and housing	
Bulb Finish	Frosted
Bulb Material	Glass
Product Length	47-1/4 in
Bulb Shape	Tube, double-ended
Approval and application	
Energy Saving Product	Yes
Approbation Marks	RoHS compliance UL certificate DLC compliance

Application conditions	
Ambient temperature range	-20 °C to 45 °C
Product data	
Order product name	14T8/COR/48-840/IF22/G/DIM/BAA 25/1
EAN/UPC - Product	046677576813
Order code	576819
Numerator - Quantity Per Pack	1
Numerator - Packs per outer box	25
Material Nr. (12NC)	929003144904
Net Weight (Piece)	0.454 lb
Model Number	9290031449

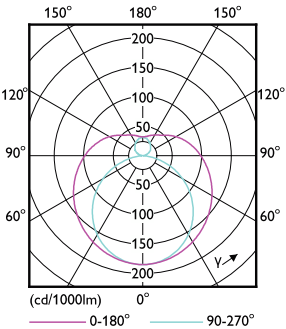
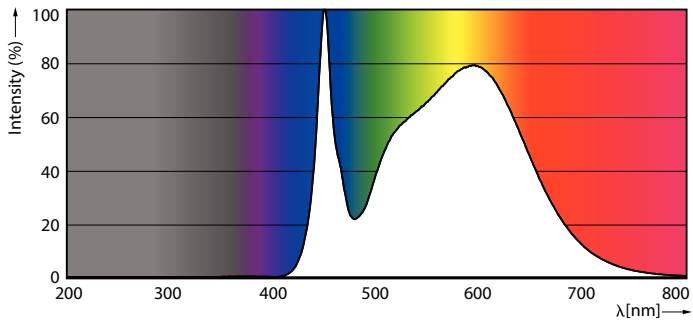
Dimensional drawing



Product	D1	D2	A1	A2	A3
14T8/COR/48-840/IF22/G/DIM/BAA 25/1	1-1/16 in	1-1/16 in	47-3/16 in	47-1/2 in	47-3/4 in

14T8/COR/48-840/IF22/G/DIM/BAA 25/1

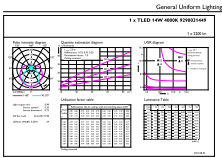
Photometric data



LEDtube COR NAM 10,5W G13 1650lm 840-POC

LEDtube COR NAM 14W G13 2100lm-LDD

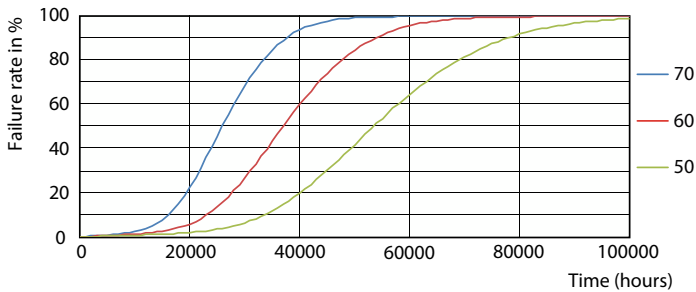
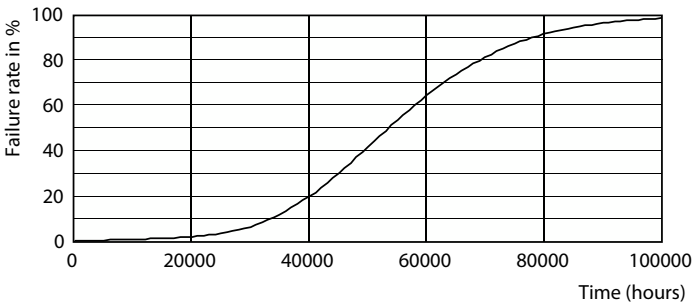
Photometric data



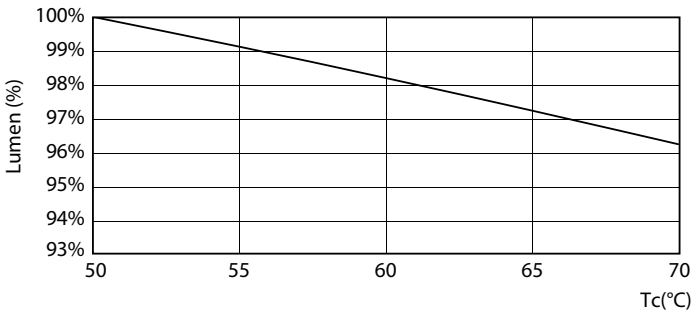
General Uniform Lighting
1 x T8 LED Tube (2200lm) (840-GUL)

LEDtube COR NAM 14W G13 2200lm 840-GUL

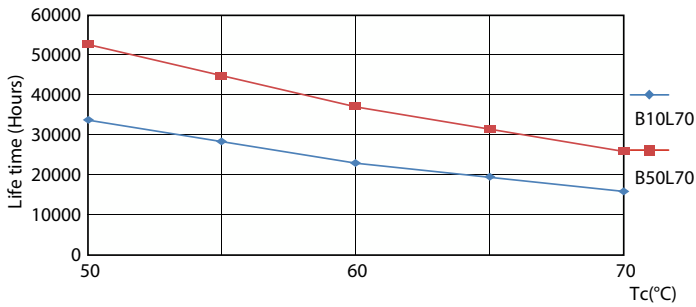
Lifetime



Life Expectancy Diagram



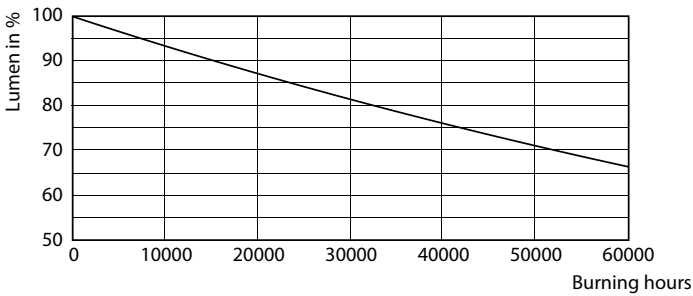
FailureRate



LEDtube COR NAM 14W 50K LumenVsTc-LMP

LifetimeVsTc

Lifetime



Lumen Maintenance Diagram

