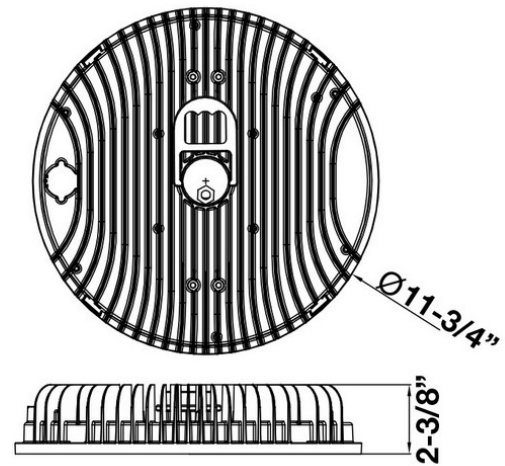
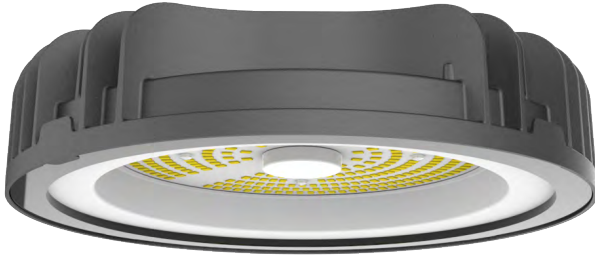




# Gen 7 ECONOMY UFO

## 120-277V 200W 5000K

### Morris Cat# 74292

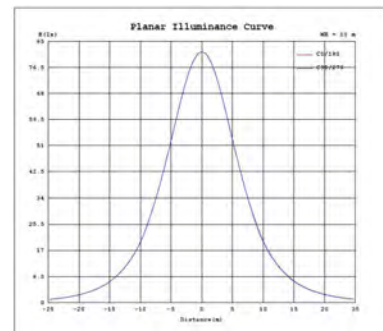
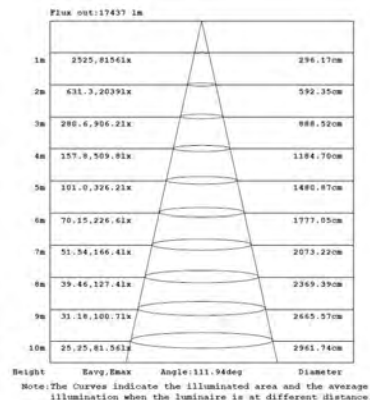
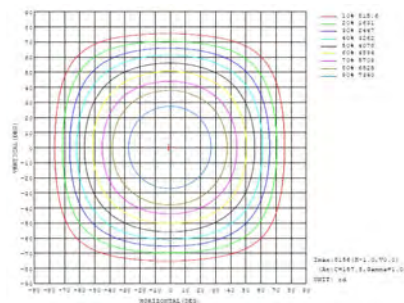
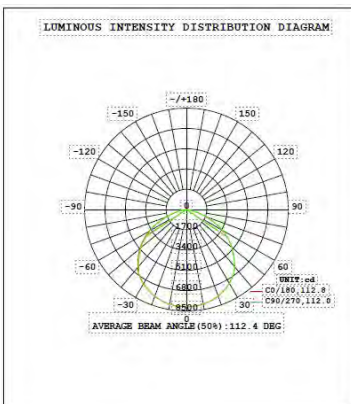


#### Features:

- Flicker Free Driver
- Clear PC Lens Eye-Hook Mount
- Corrosion Resistant Die Cast Aluminum Housing
- Integral Cooling Fin Releases Heat Efficiently to maintain the life of the LEDs/Driver
- Stainless Steel Hardware
- Operation Temperature -40°F - 122°F
- 50,000+ Hr Life Expectancy
- IP65 Rated
- 6' Wire Whip for Easy Install
- ETL Listed
- 5 Year Warranty

Part#	Wattage	Voltage	Lumens	CCT	CRI	Dimming	Lumens/Watt	Replaces Metal Halide
74292	200W	120-277V	22,525	5000K	86	N/A	113lm/w	600W

#### PHOTOMETRY:





# Gen 7 ECONOMY UFO

## 120-277V 200W 5000K

### Morris Cat# 74292

#### Technical Specifications:

##### **Electrical:**

Input Voltage: 120 thru 277

Current: 1.632A @ 120V

Frequency: 50/60Hz

Power Factor:  $\geq 0.9$

THD: 11%

##### **Product Parameters:**

200 Watts

Lumens: 22,525

Efficacy: 113 Lumens Per Watt 50,000

+ L70 Life Span

CCT: 5000K (Cool White)

##### **Chromaticity Measurements:**

Beam Angle: 110°

CRI: 86

R9: 26

DUV: 0.0007

Chromaticity (x,y): x=0.3388 y=0.3480

Chromaticity (u,v): u'=0.2085 v'=0.4820

##### **Component Specifications:**

LED: SAMSUNG 2835

Driver: 120-277V 50/60Hz

##### **Dimming:**

N/A

##### **Operating Temperature:**

Minimum Starting: -40°F - 122°F

##### **Construction:**

Housing/Trim: Aluminum

Glass Lens

IP20 Rated

##### **Listings:**

ETL

Carton Qty: 1

Weight: 6.50lbs

##### **Warranty:**

Morris Products carries a 5 year warranty from date of purchase against defects in materials and workmanship (assuming normal and proper usage).