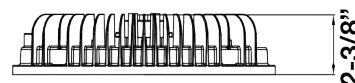
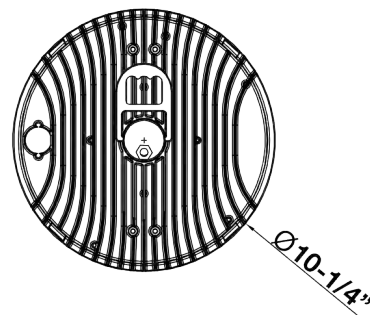
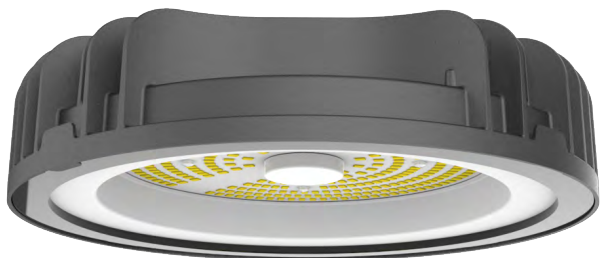




# Gen 7 ECONOMY UFO

## 120-277V 150W 5000K

### Morris Cat# 74291

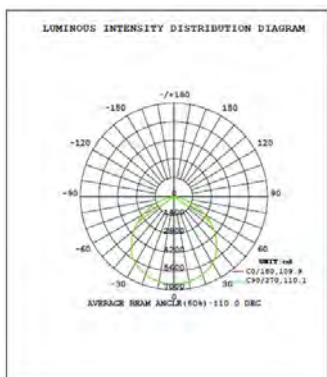


#### Features:

- Flicker Free Driver
- Clear PC Lens Eye-Hook Mount
- Corrosion Resistant Die Cast Aluminum Housing
- Integral Cooling Fin Releases Heat Efficiently to maintain the life of the LEDs/Driver
- Stainless Steel Hardware
- Operation Temperature -40°F - 122°F
- 50,000+ Hr Life Expectancy
- IP65 Rated
- 6' Wire Whip for Easy Install
- ETL Listed
- 5 Year Warranty

Part#	Wattage	Voltage	Lumens	CCT	CRI	Dimming	Lumens/Watt	Replaces Metal Halide
74291	150W	120-277V	17,763	5000K	86	N/A	118lm/w	400W

#### PHOTOMETRY:





# Gen 7 ULTRA-ECONOMY UFO

## 120-277V 150W 5000K

### Morris Cat# 74291

#### Technical Specifications:

##### **Electrical:**

Input Voltage: 120 thru 277

Current: 1.256A @ 120V

Frequency: 50/60Hz

Power Factor:  $\geq 0.9$

THD: 11%

**Operating Temperature:** -40°F - 122°F

##### **Construction:**

Housing/Trim: Aluminum

Glass Lens

IP20 Rated

##### **Product Parameters:**

150 Watts

Lumens: 17,763

Efficacy: 118 Lumens Per Watt

50,000+ L70 Life Span

CCT: 5000K (Cool White)

##### **Listings:**

ETL

Carton Qty: 1

Weight: 4.89lbs

##### **Chromaticity Measurements:**

Beam Angle: 110°

CRI: 86

R9: 24

DUV: 0.0018

Chromaticity (x,y): x=0.3410 y=0.3519

Chromaticity (u,v): u'=0.2085 v'=0.4842

##### **Warranty:**

Morris Products carries a 5 year warranty from date of purchase against defects in materials and workmanship (assuming normal and proper usage).

##### **Component Specifications:**

LED: SAMSUNG 2835

Driver: 120-277V 50/60Hz

##### **Dimming:**

N/A