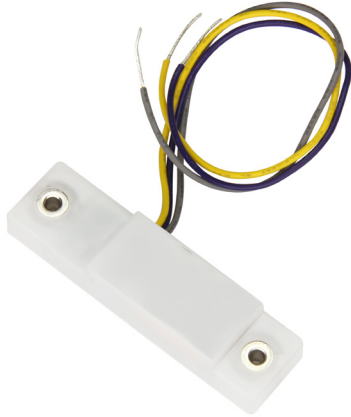


PROJECT NAME: _____ CAT. #: _____
NOTES: _____ FIXTURE SCHEDULE: _____

Network Node Magnet



c-Max Overview

c-Max Network lighting controls features a patented plug-and-play interface that allows for easy field installation of low voltage nodes and sensors to create an affordable luminaire lighting control solution. Sensors integrated with occupancy, daylight harvesting, and other control capabilities help achieve energy code compliance.

Applications:

- Office
- Hospitals
- Schools
- Warehouses
- Industrial
- Retail

Features

- Simple low voltage 3-wire sensor. Directly connects to any dim-to-off 0-10V LED drivers with a 12volt auxiliary power.
- Local Bluetooth Network with no gateway needed
- Magnetic design for easier installation without the need for mounting hardware.
- Easy Commissioning with c-Max App (Available in IOS or Android)
- 0-10V Dimming Method - with dim-to-off capability
- Bi-Level Dimming
- Individual Addressability and/or Grouping
- Multi-level dimming: Manual ON/OFF Automatic ON/OFF, and Automatic Partial ON/OFF control capability
- Ability to create scenes for more customized dimming scenarios
- Time clock scheduling for individual lights, groups, or scenes
- High-Trim/Tuning sets the maximum light level based on customer requirements in each space
- Check <https://www.maxlite.com/cmax> for c-Max fixture compatibility
- 5 Year Warranty

Ordering Information

| MODEL NUMBER | ORDER CODE |
|--------------|------------|
| NN-MGT | 105895 |

Specifications:

| | NN-MGT |
|---------------------------|--|
| BLE CONTROL NODE | Yes |
| DAYLIGHT HARVESTING | No |
| DIGITAL PIR MOTION SENSOR | No |
| OVERALL DIMENSIONS | 2.84" x 0.77" x 0.41" / 72.1mm x 19.5mm x 10.5mm |
| WEIGHT | 0.8oz/23g |
| COLOR | Translucent |
| CONNECTOR PORT | 3-wire hardwire |
| OPERATING VOLTAGE | 12-20VDC |
| OPERATING CURRENT | min 35mA |
| SINKING CURRENT | max 25mA |
| CONTROL OUTPUT | 0-10V (Linear) |
| RADIO FREQUENCY | 2.4GHz ± 75MHz |
| WIRELESS STANDARD | BLE 4.2 MESH IEEE 802.15.1 |
| PROGRAMMING | c-Max Mobile App (IOS and Android) |
| CYBERSECURITY | UL1376 Gold Rating |
| ENCRYPTION | AES 128-bit |
| MESH RANGE | 100ft node-to-node and 50ft node-to-device (Commissioning) |
| SAFETY | cULus Listed E511069 Light-emitting-diode Controllers |
| FCC | FCC ID: 2AZRDCMAX2021 |
| BQB | D055367 |
| OPERATING TEMPERATURE | -40°F to 130°F / -40°C to 55°C |
| WARRANTY | 5 years |

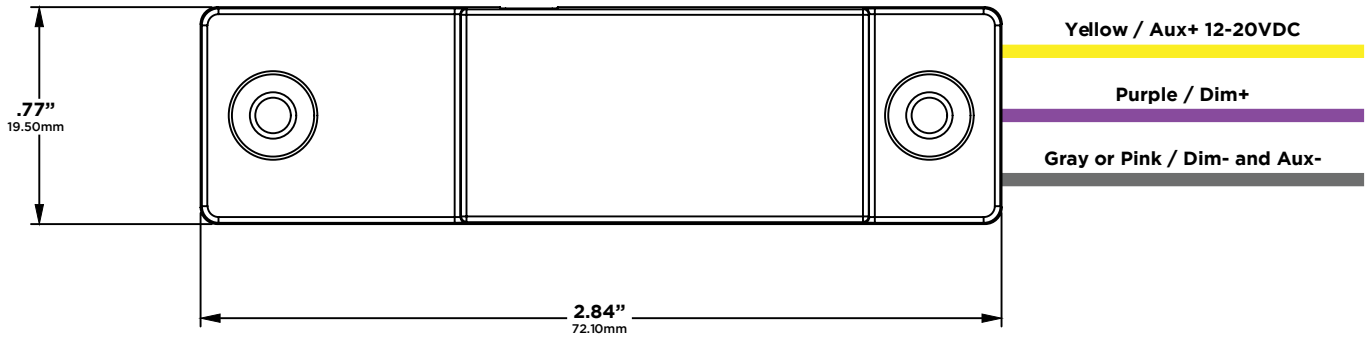


5-year standard warranty (further details available at www.maxlite.com/warranties) Product may be eligible for a warranty extension to 10 years, for an additional fee. Contact MaxLite for details.

Network Node Magnet

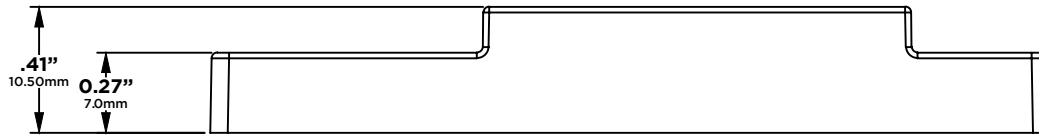
Product Dimensions

TOP



Connect the Gray/Pink wire to DIM- and AUX- together if a separate AUX- is present in the LED driver.

SIDE



Click on www.maxlite.com/cmax for cMax fixture compatibility and installation video.



Commissioning

c-Max mobile App makes it easy to pair devices, create groups, set scenes/schedules, customize dimming levels, and adjust high trim based on application needs.

Visit www.maxlite.com/cmax for How-to-Videos and a comprehensive commissioning guide.

