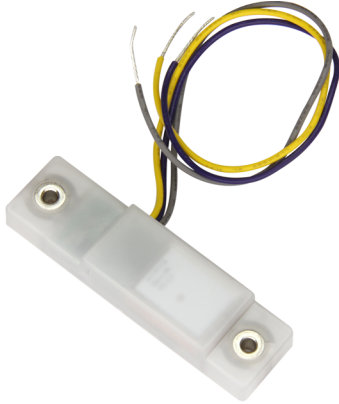


PROJECT NAME: _____ CAT. #: _____
NOTES: _____ FIXTURE SCHEDULE: _____

Control Node - Rectangular Microwave Motion Sensor

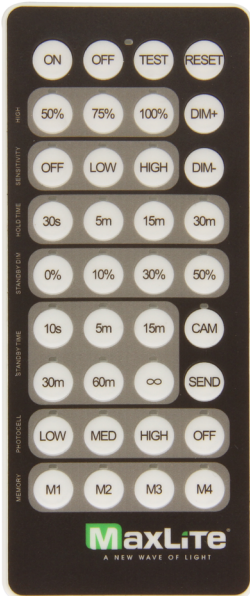


Features

- Simple low voltage 3-wire sensor. Directly connects with MaxLite "CR" Controls Ready drivers equipped with 12volt auxiliary power.
- Control Technology: Microwave for Motion sensing
- Magnetic design for easier installation without the need for mounting hardware.
- Easy Programming with IR Remote (CN-REMOTE sold separately) - Save and store settings to minimize commissioning time
- 0-10V Dimming Method - with dim-to-off capability
- Bi-Level Dimming
- Ability to set High Trim
- Check <https://www.maxlite.com/cmax> for c-Max fixture compatibility
- 5 Year Warranty

Ordering Information

MODEL NUMBER	ORDER CODE
CN-MGMST	105891
CN-REMOTE	105567



Specifications

	CN-MGMST
OPERATING VOLTAGE	12-20VDC
OPERATING CURRENT	max 20mA
SINKING CURRENT	max 25mA
SENSOR TECHNOLOGY	Microwave (5.8GHz)*
CONTROL OUTPUT	0-10V
RECOMMENDED MOUNTING HEIGHT	8-15ft / 2.5-4.5M
MAXIMUM MOUNTING HEIGHT	20ft / 6M
CONNECTOR INTERFACE	24' Flying leads
COMMISSIONING PROTOCOL	IR
CERTIFICATION	cULus Listed E511069 (Damp Listed), California Title 20 Compliant, FCC Part 15 Subpart B Class A
OPERATING TEMPERATURE	-30°F to 130°F / -35°C to 55°C
OPERATING HUMIDITY	0-85% RH Non-Condensing
HIGH TRIM	50%, 75%, 100%
OVERALL DIMENSIONS	2.84" x 0.77" x 0.41" / 72.1mm x 19.5mm x 10.5mm
COLOR	Translucent
WEIGHT	0.8oz/23g

*Not recommended for applications with other high frequency interference

Requires at least one CN-REMOTE per project for commissioning
(remote control sold separately)

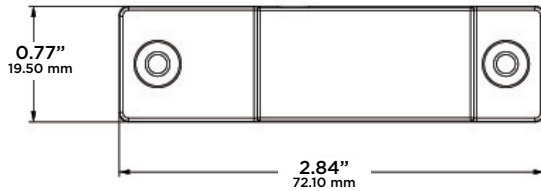


5-year standard warranty (further details available at www.maxlite.com/warranties) Product may be eligible for a warranty extension to 10 years, for an additional fee. Contact MaxLite for details.

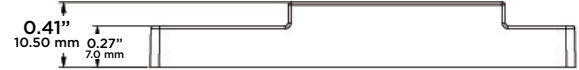
Control Node - Rectangular Microwave Motion Sensor

Product Dimensions

TOP

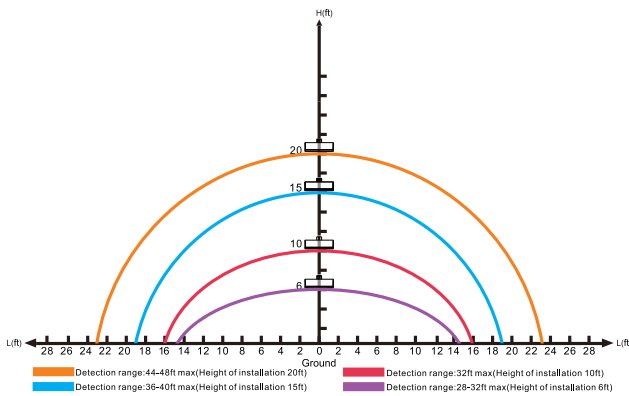


SIDE

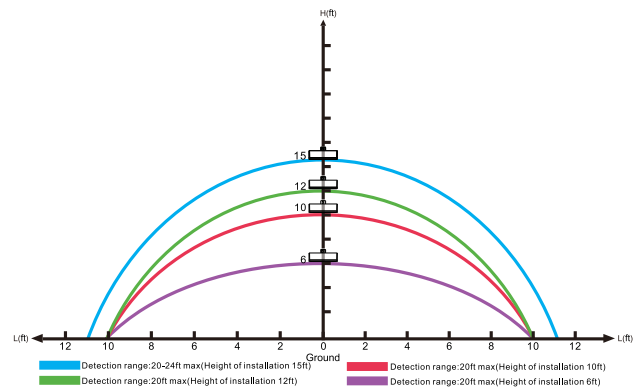


Detection Coverage

SENSITIVITY HIGH



SENSITIVITY LOW



*Detection range based on individual sensor. Detection ranges may vary depending on the physical application and location of the sensor inside the Luminaire.

Click on www.maxlite.com/cmax for cMax fixture compatibility and installation video.



Basic Control Remote - Quick Guide



Check out the
remote commissioning
video here.



Remote Settings

FEATURE	DEFINITION	SETTINGS
HIGH MODE	Set High Trim or Maximum light output setting	SET MAXIMUM THRESHOLD VALUE 50/75/100%. (SENSOR DEFAULT = 100%)
SENSITIVITY	Set motion detection sensitivity	OFF (NO OCCUPANCY) / LOW (50%) / HIGH (100%) (SENSOR DEFAULT=HIGH)
HOLD TIME	Time luminaire stays at the High Trim threshold when no motion detected before going into Standby Dim level.	30S/5M/15M/30M (SENSOR DEFAULT=5MIN)
STANDBY DIM	With no motion detected and hold time elapsed, light output is reduced to this level	0/10/30/50% (SENSOR DEFAULT=50%)
STANDBY TIME	With no motion detected, length of time luminaire stays at the Standby Dim level before turning OFF.	10S / 5MIN / 15MIN / 30MIN / 60MIN / ∞ (SENSOR DEFAULT=30MIN)
PHOTOCELL	Turns luminaire ON/OFF based on photosensor settings. (Outdoor application)	LOW(1FC) / MEDIUM(20FC) / HIGH(50FC) (SENSOR DEFAULT = PC OFF)

Default settings can be changed during commissioning
For Standby Dim, "0%" means on/off control. There is no standby dimming level.
For Standby time "∞" means bi-level dimming control. Luminaire will never turn off.

Memory Mode (Commissioning)

To begin commissioning, follow the steps below:

1. Select either M1, M2, M3, or M4.
2. Indicator lights on the remote will illuminate to indicate the current saved settings.
3. Settings can be changed by pressing appropriate buttons in the highlighted gray area of the remote. (HIGH, SENSITIVITY, HOLD TIME, STANDBY DIM, STANDBY TIME, and PHOTOCELL).
Review selected settings and make changes as necessary.
4. Point remote to desired luminaire to commission and press "SEND".
5. If configuration is successful, luminaire will blink suggesting settings are saved.

Note that any changes made to the sensor settings are automatically saved to the memory banks M1, M2, M3 or M4 and will override previous settings.

If commissioning multiple luminaires, select the configured memory mode M1/M2/M3/M4 then follow steps 4 and 5.

Test Mode

Press "TEST" to enter test mode. Luminaire will blink.

Test mode will last five (5) minutes then return to previous setting.

HOLD TIME	2 Seconds
STANDBY DIM	50%
STANDBY TIME	2 Seconds

To Turn Lights ON

Press "ON" to turn luminaire on.

To Turn Lights OFF

Press "OFF" to turn luminaire off.

Manual Dimming Mode

Press "ON", luminaire will blink, then press DIM+ or DIM- to adjust dimming level.

Daylight Harvesting (Photocell ON/OFF)

As part of the memory mode commissioning, photocell can be set at either Low, Medium, High. Continuous adjustment mode (CAM) is not recommended with CN-RTMST.

Reset Mode

Press "RESET" to enter reset mode. Luminaire will blink to indicate reset is complete. Sensor will default to original settings shown in the above table.