



SINCE 1945
KEYSTONE
LIGHT MADE EASY®

XFit
STAIRWELL FIXTURES
Lighting for Stairwells and Corridors

NOVEMBER 2021

Innovative illumination to light the way.

XFit Stairwell Fixtures—part of Keystone’s complete line of lighting solutions—offer innovative illumination for stairwells and corridors in commercial and retail applications. They’re available with Keystone’s Power Select and Color Select technology, which allows you to make changes in power output and color temperature simply by flicking a switch.

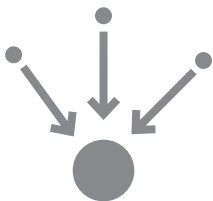
Keystone Stairwell Fixtures also come with integrated ultrasonic occupancy sensors and compatibility with Keystone’s Smart Safe emergency LED drivers. They provide safety and security—and embody Light Made Easy®.



- 4 Stairwell Fixtures
- 8 Ultrasonic Sensor Feature
- 10 Part Numbers and Product Specs



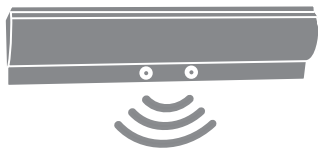
Specialized Applications
Stairwell fixtures offer bright light for building egress, particularly in emergency conditions.



Versatility & SKU Reduction
Keystone’s innovative, adjustable Power and Color Select technology provide simple stocking options and versatility in the field.



Compatible with Emergency LED Drivers
Guaranteed performance between Keystone driver, fixture, and EMRG backup provides reliability.



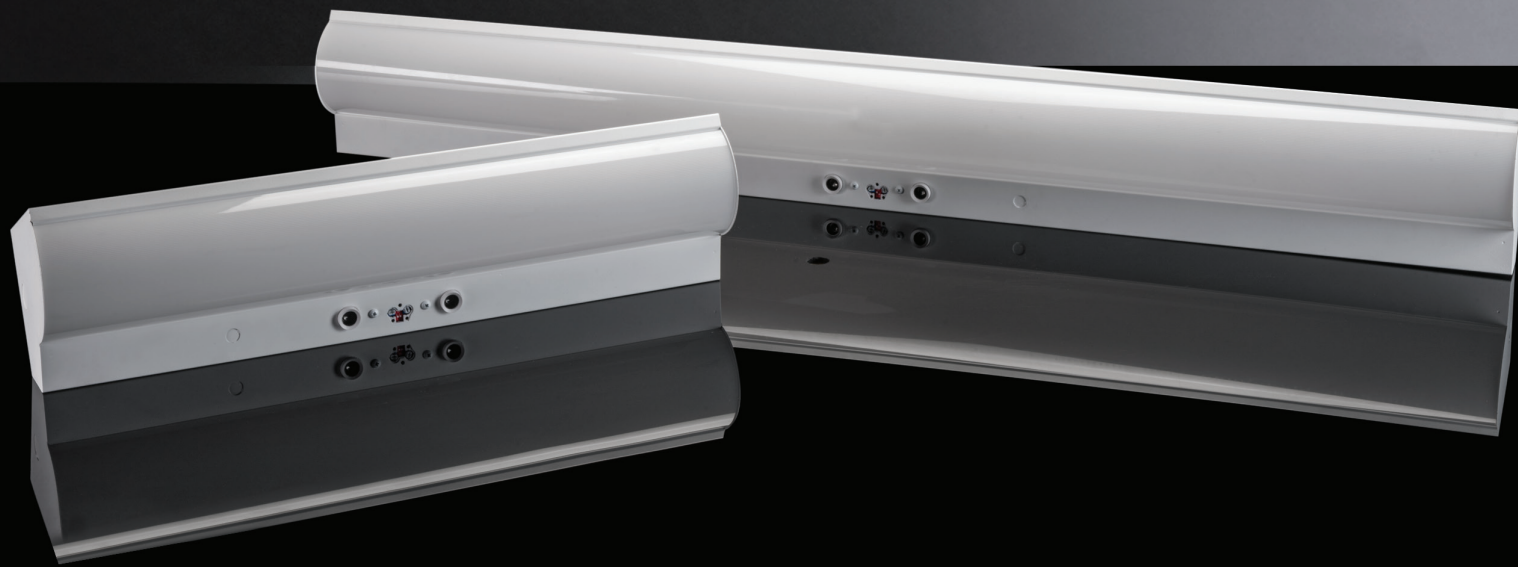
Integrated Sensor
Ultrasonic occupancy sensor delivers motion detection to ensure lights are on at full brightness when people are present, offering pathfinding for guests and patrons.



Reliable and Secure
Keystone products are built to last and feature our 5-year warranty and unparalleled service.

XFIT | STAIRWELL FIXTURES

Proven dependability
in a modern design.

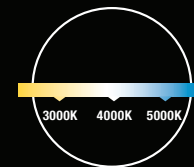


Power and Color Select

Keystone's innovative technology for selecting lumen output and color temperature at the touch of a switch—reducing SKUs by up to 90% and allowing users to make adjustments in the field and on the fly.



5 YEAR
WARRANTY



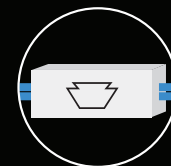
COLOR SELECT TECHNOLOGY

ADJUSTABLE: 3500K / 4000K / 5000K



POWER SELECT TECHNOLOGY

REDUCE SKUs & INCREASE BOTH FLEXIBILITY & CONVENIENCE WITH FIELD ADJUSTABLE POWER OUTPUTS (2' - 25W / 20W / 15W; 4' - 45W / 35W / 30W)



BUILT-IN 120-277V KEYSTONE LED DRIVER

PROVIDES 0-10V DIMMING & AMPLE SURGE PROTECTION FOR INCREASED VERSATILITY & RELIABILITY



INTEGRATED ULTRASONIC SENSOR

ABLE TO SENSE MOTION WITHOUT DIRECT LINE OF SIGHT YET CAPABLE OF PREVENTING FALSE "ON" STATES

XFIT STAIRWELL FIXTURES

Selectable Options



Available in
2' and 4' Sizes

2' Fixture:
25W/20W/15W
3150 lm / 2580 lm / 1980 lm
3500K 4000K 5000K

4' Fixture:
45W/35W/30W
5580 lm / 4550 lm / 3990 lm
3500K 4000K 5000K

Available with
Integrated EMRG
Battery Options

- Compatible with Keystone's Smart Safe emergency LED drivers
- Provides emergency lighting for a minimum of 90 minutes
- Can ship factory installed



EMERGENCY
TEST BUTTON



CHANGE POWER OUTPUT
AND COLOR TEMPERATURE
AS NEEDED WITH ADJUSTABLE
SWITCHES

Neutral White
3500K

Daylight
5000K

COLOR SELECT SWITCH



POWER SELECT SWITCH

15 | 20 | 25

2' FIXTURE

TRIMPOTS SET
LEFT: DETECTION RANGE
RIGHT: TIME DELAY



DIPSWITCH DIMMING
ADJUSTMENT
(50%, 25%, 10%, OFF)

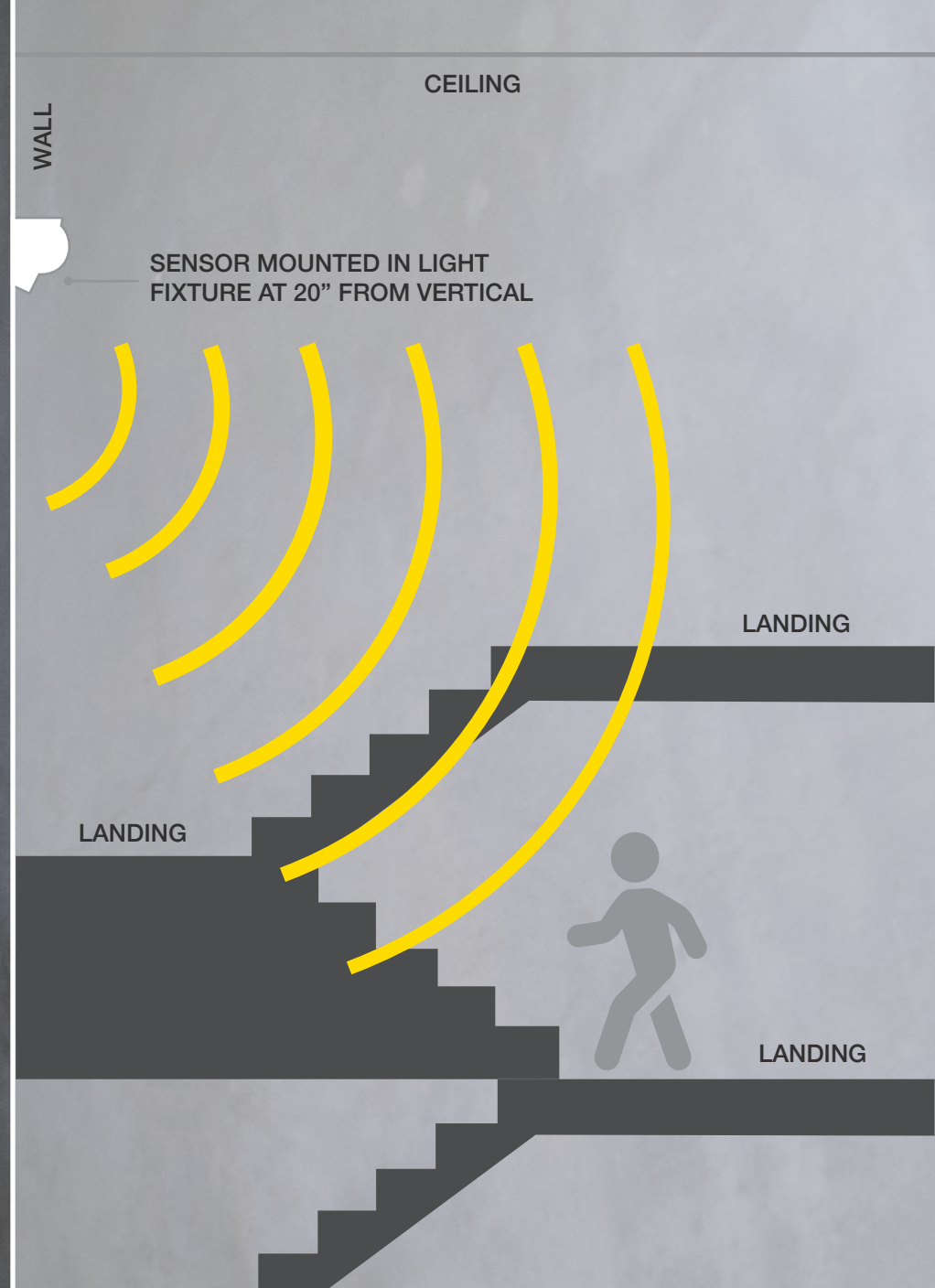
INTEGRATED ULTRASONIC SENSORS
PREVENT FALSE OR UN-NEEDED "ON"
STATES

Features & Benefits

- Available in 2' and 4' sizes
- Input voltage: 120V-277V
- Post-painted steel body
- Smooth, diffused PMMA lens for even lighting appearance
- UL Listed 1598: Suitable for dry and damp locations
- LED lifetime L70 rating of >50,000 hours
- THD: <20%
- Power Factor: >0.95

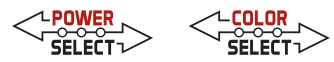
Keystone's XFit Stairwell fixtures include an integrated ultrasonic occupancy sensor and are available in various power levels and color temperatures. Their light uniformity ensures comfortable and safe conditions for stairwells and corridors in commercial and retail applications.

Why ultrasonic sensing?



Ultrasonic is quicker to react in stairwell applications without direct line of sight than PIR or microwave technologies—so the light comes on before people are in the area. In addition, its degree of sensitivity prevents false or un-needed “on” states from motion behind walls separate from the stairwell or desired area of detection.

Stairwell Fixtures



2’ FIXTURES

CATALOG NUMBER	WATTAGE	SELECTABLE COLOR TEMPS	LUMENS	EFFICACY	INPUT VOLTAGE	CRI	DIMMING	LIFETIME
KT-SWLED25PS-2A-8CSA-VDIM-P	25W	3500K	3100 lm	124 lm/W	120-277V	> 80	0-10V	50,000 hrs
		4000K	3125 lm	125 lm/W				
		5000K	3150 lm	126 lm/W				
	20W	3500K	2540 lm	127 lm/W	120-277V	> 80	0-10V	50,000 hrs
		4000K	2560 lm	128 lm/W				
		5000K	2580 lm	129 lm/W				
	15W	3500K	1950 lm	130 lm/W	120-277V	> 80	0-10V	50,000 hrs
		4000K	1965 lm	131 lm/W				
		5000K	1980 lm	132 lm/W				

4’ FIXTURES

CATALOG NUMBER	WATTAGE	SELECTABLE COLOR TEMPS	LUMENS	EFFICACY	INPUT VOLTAGE	CRI	DIMMING	LIFETIME
KT-SWLED45PS-4A-8CSA-VDIM-P	45W	3500K	5490 lm	122 lm/W	120-277V	> 80	0-10V	50,000 hrs
		4000K	5535 lm	123 lm/W				
		5000K	5580 lm	124 lm/W				
	35W	3500K	4480 lm	128 lm/W	120-277V	> 80	0-10V	50,000 hrs
		4000K	4515 lm	129 lm/W				
		5000K	4550 lm	130 lm/W				
	30W	3500K	3930 lm	131 lm/W	120-277V	> 80	0-10V	50,000 hrs
		4000K	3960 lm	132 lm/W				
		5000K	3990 lm	133 lm/W				

FIXTURES WITH FACTORY INSTALLED
EMERGENCY BACK-UP OPTION

5W

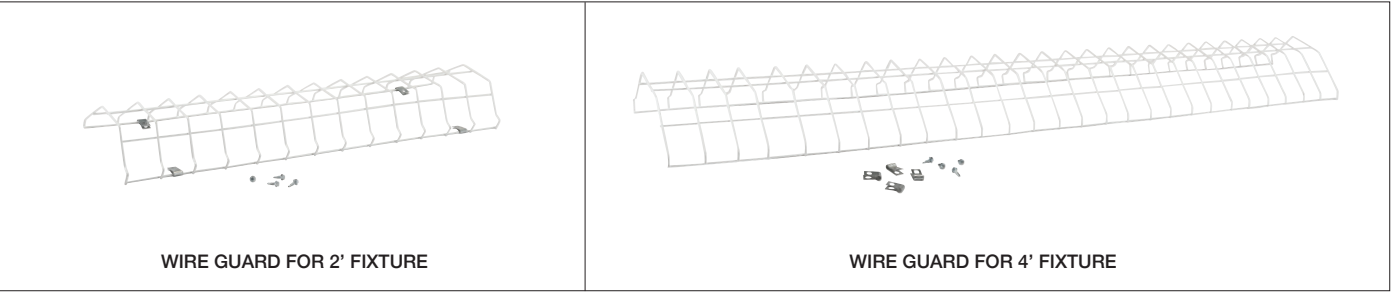
CATALOG NUMBER	NOMINAL LENGTH	OUTPUT POWER	INPUT VOLTAGE	OUTPUT CURRENT	OUTPUT VOLTAGE	CEC T20 COMPLIANT
KT-SWLED25PS-2A-8CSA-VDIM-P /EMRG-5	2’	5W	120-277V	250mA-86mA	20~60Vdc	Yes
KT-SWLED45PS-4A-8CSA-VDIM-P /EMRG-5	4’					

12W

CATALOG NUMBER	NOMINAL LENGTH	OUTPUT POWER	INPUT VOLTAGE	OUTPUT CURRENT	OUTPUT VOLTAGE	CEC T20 COMPLIANT
KT-SWLED25PS-2A-8CSA-VDIM-P /EMRG-12	2’	12W	120-277V	600mA-206mA	20~60Vdc	Yes
KT-SWLED45PS-4A-8CSA-VDIM-P /EMRG-12	4’					

Accessories

CATALOG NUMBER	DESCRIPTION
KT-SWLED-WG-1-KIT	Wire guard for 2’ fixture; Thick steel wire and premium white powder coat construction
KT-SWLED-WG-2-KIT	Wire guard for 4’ fixture; Thick steel wire and premium white powder coat construction



The Keystone Difference

Our mission at Keystone is to change the way you think about lighting. We believe that lighting should be simple, hassle-free, and enjoyable. Keystone is Light Made Easy®.

