



GES1000TRIAC5-5

- ## Product Photo



PRODUCT INFORMATION

DIMENSIONS

Diameter	2.0
Weight	27.42 lb
Exit Type	

ELECTRICAL CHARACTERISTICS

Capacitance	26
Supply Current Frequency<Min>	60
Voltage<Min>	540 V

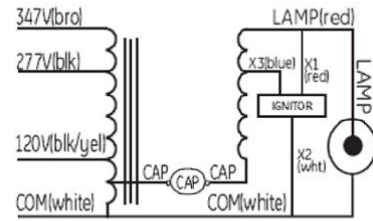
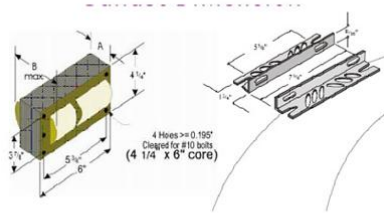
SAFETY & PERFORMANCE

- ☞ cUL_Listed
- ☞ UL_Listed

SPECIFICATIONS BY LAMP & WATTAGE

Lamp	# of Lamps	Line Volts	System Watts	Nom. Line Current	System Ballast Factor	Ballast Efficacy Factor	Power Factor% (>=)	Crest Factor (<=)	THD% (<=)	Min. Starting Temp (F/ C)
S52 High Pressure Sodium	1	120	1100	9.5	1.0		90.0			-40
S52 High Pressure Sodium	1	277	1100	4.1	1.0		90.0			-40
S52 High Pressure Sodium	1	347	1100	3.3	1.0		90.0			-40





Feb 13, 2018 3:04:27 PM For additional information, visit www.gelighting.com