



WIRELESS MOTION SECURITY LIGHT

BL-SMSL/BL-CMSL Owner's Manual

Includes

Security Light, (3) Mounting Screws, Wall Anchors and Screwdriver for Battery Cover

Save These Instructions

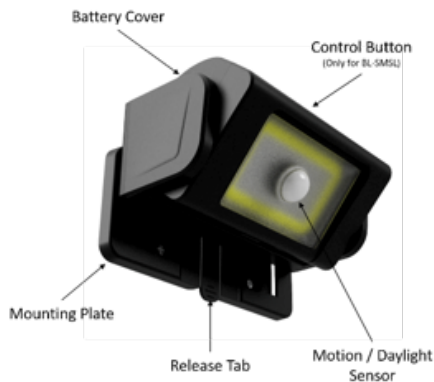
1. Read and understand all instructions before installing
2. Keep instructions in a safe place for future reference

Preparation for Installation

Tools Needed

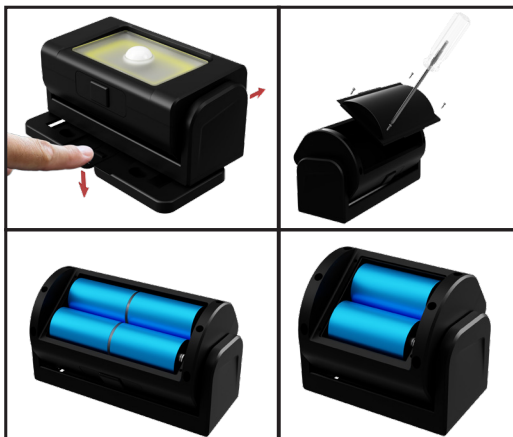


Security Light



Battery Installation:

1. Remove mounting plate from Security Light by holding down the release tab and slide the light off the mounting plate.
2. Using the included screwdriver, loosen the four screws on the Battery Cover and remove. Keep the Battery Cover oriented down to prevent screws from falling out.
3. For standard size light (BL-SMSL), insert 4 D batteries into your security light following the illustration inside the battery compartment. For compact size light (BL-CMSL), insert 2 D batteries. Ensure the batteries are inserted so that the flat ends are making contact with the springs.
4. Replace Battery Cover and tighten screws to ensure a weatherproof seal. To maintain proper weatherproof protection, **DO NOT** over-tighten.



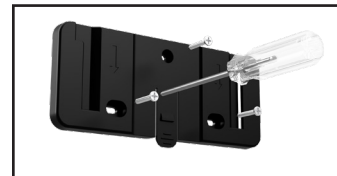
BL-CMSL (Compact)



BL-SMSL (Standard)

Light Installation:

1. Determine mounting location. Place the Mounting Plate on the surface with the Release Tab pointing down, then mark the pilot holes. Be sure to leave at least 4 inches of clearance above the Mounting Bracket so there is room to slide the light on and off the Mounting Bracket.



2. Drill pilot holes in the location you want to mount the light. If mounting to drywall, use included anchors and screws. Use a hammer to tap the plastic anchors into the pilot holes before screwing in the Mounting Plate.
3. Align Mounting Plate to holes on mounting surface. Then tighten with the mounting screws. Line up the light with the Mounting Plate and slide into the grooves until you hear it click and lock into place.



Operation:

1. Standard size light (BL-SMSL) has a Control Button located on top of the light to change the lumens from high to low. The lower setting will provide a longer battery life.
2. Compact size light (BL-CMSL) only has one light level.
3. Both sizes are controlled with Motion and Day Light Sensor. Light is illuminated when motion is detected in the dark and will stay ON for 20 seconds once motion stops.

Limited Warranty

Under normal use and conditions, AmerTac provides to the original purchaser of this product a one year limited express warranty that is set forth in the Limited Warranty stated in full at www.amertac.com/warranties. The Limited Warranty is in lieu of all other express or implied warranties or liabilities subject to the exceptions explained fully in the Limited Warranty on the website. **Prop 65 WARNING:** This product can expose you to chemicals including lead and DINP, which are known to the State of California to cause birth defects or other reproductive harm. For information go to www.P65Warning.ca.gov.

©2020 AmerTac™
250 Boulder Drive
Breinigsville, PA 18031
www.amertac.com
Made in China
BO_TL_044_0820