

# LEDVANCE Luminaires

## NON-CUTOFF WALL PACK

PERFORMANCE CLASS

### Application

The Wall Pack luminaires are environmentally preferable LED alternatives to traditional HID luminaires, offering up to 78% in energy savings. Ideal in place of traditional luminaires, or as new installations, the Wall Pack series is offered in several wattages/lumen packages for illuminating building exteriors, outdoor corridors, walkways, and stairwells.

### Benefits and Features

- DLC Premium listing and lumen selectability provide high energy efficacy and optimize this product for utility rebates
- Optional integrated photocell for additional energy savings
- Traditional sizes allow for lowered installation costs
- Up to 151 LPW
- Selectable 3000K, 4000K and 5000K color temperature
- CRI >80
- Offered in 40, 80 and 110 watts
- Energy savings up to 78%

### Electrical

- 120-277V<sub>AC</sub>
- Power Factor >90%
- THD <20%
- 0-10V dimmable
- UV stabilized polycarbonate lens

### Rated Life

- 150,000 hours (L<sub>70</sub>) for 40W and 80W models
- 140,000 hours (L<sub>70</sub>) for 110W model

### Warranty

- 5-year
- NLB Trusted Warranty Program

### Ambient Operating Range

- -40°F to +102°F (-40°C to +40°C)

### Certifications and Listings

- cULus
- FCC
- RoHS
- DLC 5.1 Premium



### Wattage Comparison

Traditional Source	Traditional System Wattage	LED System Wattage	Energy Savings
42W CFL	46	15	67%
35W HPS	45	15	67%
50W MH/HPS	62	15	76%
50W MH/HPS	62	25	60%
70W HPS	91	25	73%
70W HPS	91	40	56%
100W HPS	120	40	67%
100W MH	130	40	69%
70W HPS	91	45	51%
100W HPS	120	45	63%
100W MH	130	45	65%
150W HPS	170	65	62%
150W MH	188	65	65%
175W MH	210	65	69%
175W MH	210	80	62%
250W MH	290	80	72%
250W HPS	295	80	73%
320W MH	370	95	74%
400W HPS	460	110	76%
400W MH	450	110	76%

### Installation

- Luminaire mounts to exterior wall



Specification Data

Catalog #	Type
Project	
Comments	
Prepared by	

Ordering Guide

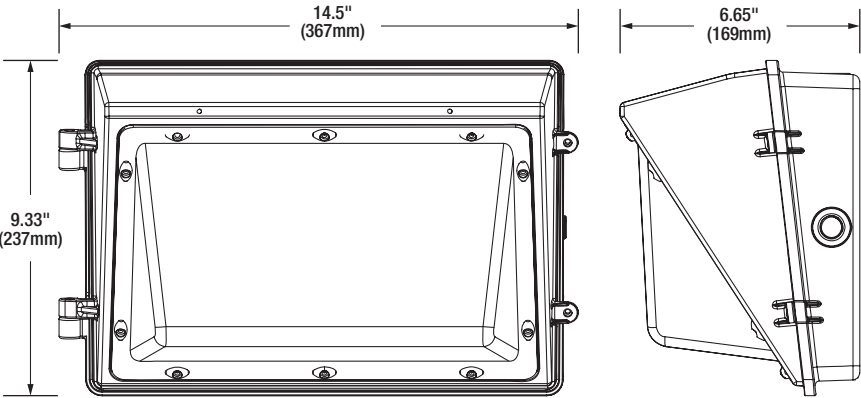
WALPAKN	7A	/	XXX	UNV	D	8	SC2	/	BZ	/	XX
Product Name	Generation		Wattage	Voltage	Dimming	CRI	Color Temp		Color/Finish		Options
WALPAKN = Non-Cutoff Wall Pack	7A= Generation 7		040 = 15, 25 or 40W 080 = 45, 65 or 80W 110 = 75, 95 or 110W	UNV = 120-277V	D = 0-10V dimming	8 = >80	SC2 = 3000K, 4000K or 5000K		BZ = Bronze		E = Emergency Battery Back-up P = Photocell PE = Photocell + Emergency Battery Back-up D = Daylight/Motion Sensor

Ordering Information

Item Number	Ordering Abbreviation	Wattage (W)	Input Voltage (V)	Dimming	CRI	Color Temperature (CCT)	Total Fixture Lumens*	LPW	Color	DLC	BUG Rating	Options
62522	WALPAKN7A/040UNVD8SC2/BZ/P	15/25/40	120-277	0-10V	>80	3000/4000/5000K	Up to 5696	150	Bronze	Premium	B1-U3-G3	Photocell
62523	WALPAKN7A/080UNVD8SC2/BZ/P	45/65/80	120-277	0-10V	>80	3000/4000/5000K	Up to 11,655	150	Bronze	Premium	B2-U4-G5	Photocell
62524	WALPAKN7A/110UNVD8SC2/BZ/P	75/95/110	120-277	0-10V	>80	3000/4000/5000K	Up to 15,394	150	Bronze	Premium	B3-U5-G5	Photocell
62908	WALPAKN7A/S040UNVD8SC2/BZ/D	15/25/40	120-277	0-10V	>80	3000/4000/5000K	Up to 5696	150	Bronze	Premium	B1-U3-G3	Daylight/Motion Sensor
62909	WALPAKN7A/S080UNVD8SC2/BZ/D	45/65/80	120-277	0-10V	>80	3000/4000/5000K	Up to 11,655	150	Bronze	Premium	B2-U4-G5	Daylight/Motion Sensor
62910	WALPAKN7A/S110UNVD8SC2/BZ/D	75/95/110	120-277	0-10V	>80	3000/4000/5000K	Up to 15,394	150	Bronze	Premium	B3-U5-G5	Daylight/Motion Sensor

\*Lumens based on 3000K CCT

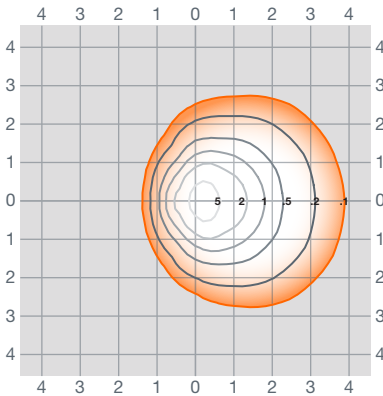
Physical Information



## Photometric Information

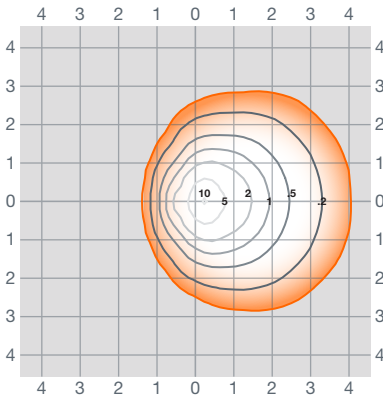
### 62522

Isofootcandle Lines at  
15' Mounting Height



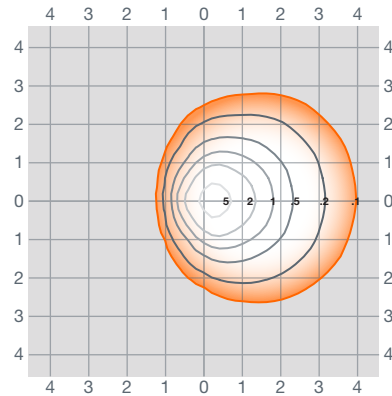
### 62523

Isofootcandle Lines at  
20' Mounting Height



### 62524

Isofootcandle Lines at  
25' Mounting Height



For other mounting heights apply the following multipliers:

Mounting Height	12'	15'	18'	20'	22'
Multiplier	1.56	1.00	0.69	0.56	0.46

Mounting Height	15'	18'	20'	22'	25'
Multiplier	1.78	1.23	1.00	0.83	0.64

Mounting Height	22'	25'	30'	32'	35'
Multiplier	1.29	1.00	0.69	0.61	0.51

LEDVANCE LLC  
181 Ballardvale Street  
Wilmington, MA 01887 USA  
Phone 1-800-LIGHTBULB (1-800-544-4828)  
[www.ledvanceUS.com](http://www.ledvanceUS.com)

SYLVANIA and LEDVANCE are registered trademarks.  
All other trademarks are those of their respective owners.  
Licensee of product trademark SYLVANIA in general lighting.  
Specifications subject to change without notice.

[/sylvania](https://twitter.com/sylvania) [/sylvania](https://facebook.com/sylvania)

