

# MasterConnect T8

## 14.5T8/48-840/MF21/MC IA 10/1

Introducing MasterConnect LED lamps - smart retrofit LED lamps that give you an easy and seamless way to upgrade to connected lighting. Simply set up with an intuitive app, MasterConnect LED lamps can be programmed to maximize energy savings, while providing wireless and automated light for your comfort and convenience. What's more, it is fully scalable and upgradable. If you want to enjoy further benefits such as remote control or management dashboard, you can simply keep the currently installed lamps and add a gateway to experience all the advantages of a cloud-based system. There's no better way to take lighting solutions to the next level.

### Product data

General information	
Cap-Base	G13 ROT (Rotating) [ Medium Bi-Pin Fluorescent]
EU RoHS compliant	Yes
Nominal Lifetime (Nom)	70000 h
Switching Cycle	50000
Tier	MasterConnect
Light technical	
Color Code	840 [ CCT of 4000K]
Beam Angle (Nom)	160 °
Luminous Flux (Nom)	2100 lm
Color Designation	Cool White (CW)
Correlated Color Temperature (Nom)	4000 K
Luminous Efficacy (rated) (Nom)	144.00 lm/W
Color Consistency	<6
Color Rendering Index (Nom)	82

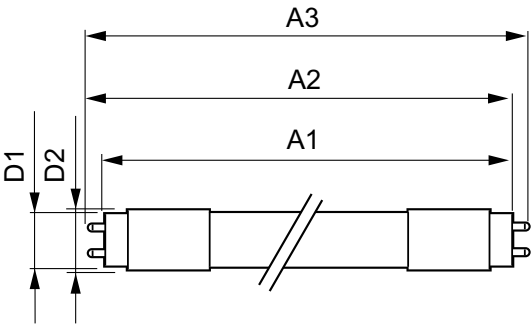
LLMF At End Of Nominal Lifetime (Nom) 70 %	
Operating and electrical	
Input Frequency	50 to 60 Hz
Power (Nom)	14.5 W
Lamp Current (Max)	125 mA
Lamp Current (Min)	59 mA
Wattage Equivalent	25-28-30-32 W
Starting Time (Nom)	1 s
Warm Up Time to 60% Light (Nom)	0.5 s
UL Type	TLED_Type B; UL classified double end
Power Factor (Nom)	0.9
Voltage (Nom)	120-277 V
Temperature	
T-Ambient (Max)	45 °C
T-Ambient (Min)	-20 °C
T-Storage (Range)	-40 °C to 65 °C

MasterConnect T8

T-Storage (Max)	65 °C
T-Storage (Min)	-40 °C
T-Case Maximum (Nom)	45 °C
<b>Controls and dimming</b>	
Dimmable	Wireless Dim
<b>Mechanical and housing</b>	
Bulb Finish	Frosted
Bulb Material	Plastic
Product Length	1200 mm
Bulb Shape	Tube, double-ended
<b>Approval and application</b>	
Energy Saving Product	Yes
Approval Marks	RoHS compliance UL certificate DLC compliance

Energy Consumption kWh/1000 h	- kWh
<b>Application conditions</b>	
Ambient temperature range	-20 °C to 45 °C
<b>Product data</b>	
Order product name	14.5T8/48-840/MF21/MC IA 10/1
EAN/UPC - Product	046677562748
Order code	929002456704
Numerator - Quantity Per Pack	1
Numerator - Packs per outer box	10
Material Nr. (12NC)	929002456704
Net Weight (Piece)	0.220 kg
Model Number	9290024567

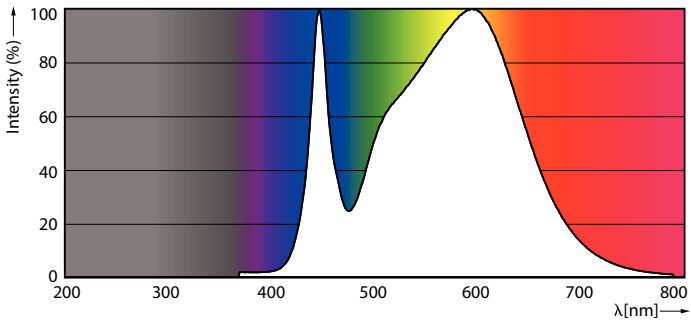
Dimensional drawing



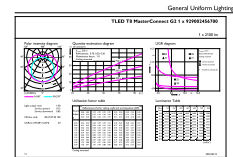
14.5T8/48-840/MF21/MC IA 10/1

Product	D1	D2	A1	A2	A3
14.5T8/48-840/MF21/MC IA 10/1	25.7 mm	28 mm	1198 mm	1205 mm	1212 mm

Photometric data

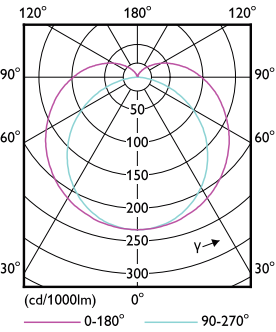


LEDtube MAS 14,5W G13 2100lm 840



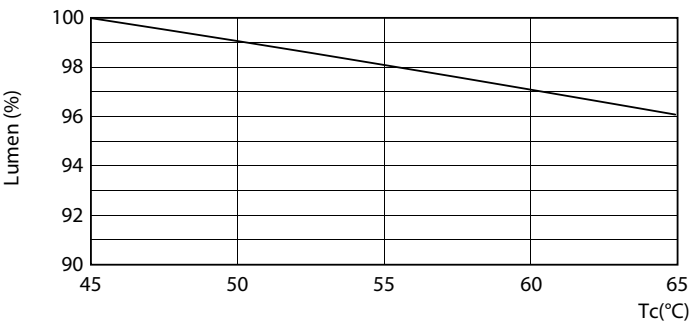
LEDtube MAS 14,5W G13 2100lm 840

Photometric data

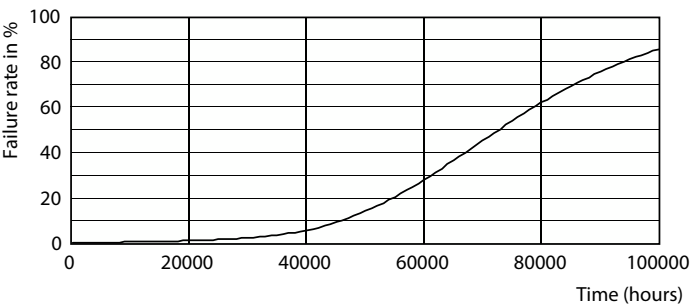


LEDtube MAS 14,5W G13 2100lm

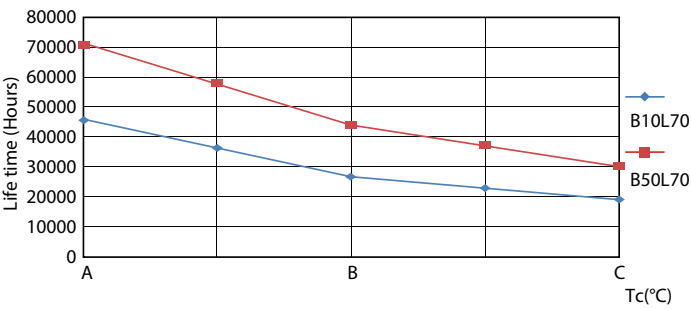
Lifetime



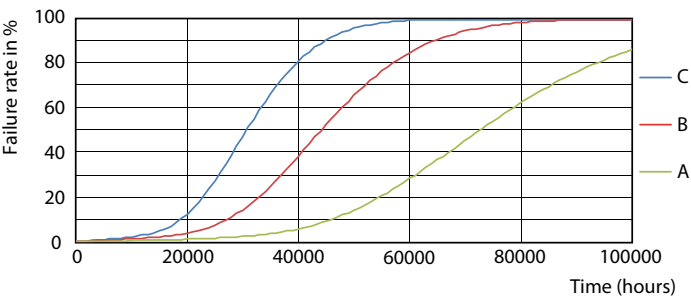
LEDtube 14,5W 70K LumenVsTc



Life Expectancy Diagram



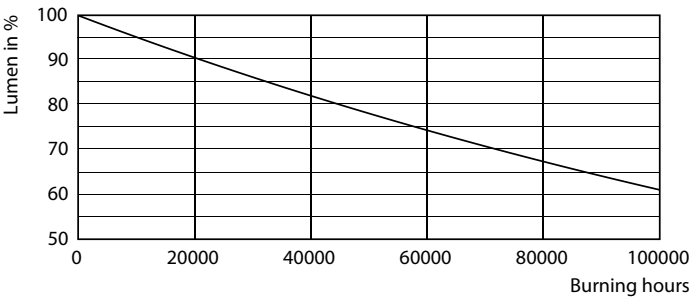
LEDtube\_70K\_LifetimeVsTc-LED



LEDtube\_70K\_FailureRate-LED

MasterConnect T8

Lifetime



Lumen Maintenance Diagram

