

IMPORTANT SAFETY INSTRUCTIONS

When using electrical products, basic precautions should always be practiced including the following:

1. READ AND FOLLOW ALL SAFETY INSTRUCTIONS.
2. Read and follow all instructions on the product or provided with the product.
3. Unplug from outlet before shortening, cutting or installing this product
4. Do not use an extension cord to supply power to the strip.
5. Do not use within 10 feet of a pool.
6. Do not use in a bathroom.
7. This product is NOT a toy.
8. To avoid damage, use only with the power supply provided.
9. Do not open the product. Use only as intended.
10. Do not roll up the product when using. Spread out to full length before connecting power supply.
11. Do not operate if any component is damaged.

WARNING:

Risk of Electric Shock. Ensure that the power unit and cord do not interfere with completely closing the receptacle cover.

WARNING:

Risk of Electric Shock. Mount the unit at a height greater than 1 foot from the ground surface.

SAVE THESE INSTRUCTIONS

This manual contains important safety and operating instructions to power the unit.

Controller Module Button

- Single click - to cycle through grow light presets
- Press and hold - to turn off the light

Controlling Multiple Lights

Link Together: Connect one light into the end of the other light. Maximum total length: 24 feet.

Controller
Module



LIMITED WARRANTY. This product is warranted to be free from defects in workmanship and materials for up to 1 year from date of purchase. If the product fails within the warranty period, please contact Feit Electric at feit.com/help for help. REPLACEMENT OR REFUND IS YOUR SOLE REMEDY. EXCEPT TO THE EXTENT PROHIBITED BY APPLICABLE LAW, ANY IMPLIED WARRANTIES ARE LIMITED IN DURATION TO THE DURATION OF THIS WARRANTY. LIABILITY FOR INCIDENTAL OR CONSEQUENTIAL DAMAGES IS HEREBY EXPRESSLY EXCLUDED. Some states and provinces do not allow the exclusion of incidental or consequential damages, so the above limitation or exclusion may not apply to you. This warranty gives you specific legal rights, and you may also have other rights which vary from state to state or province to province.

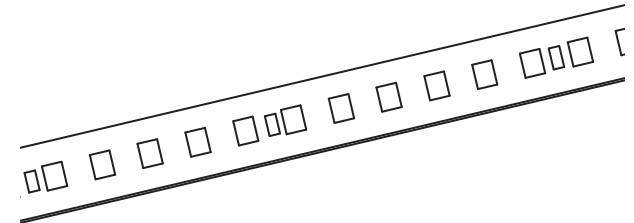
MODEL: TAPE48/GROW/LED



Adjustable Color Spectrum - 8ft.

LED Grow Tape Light

Quick Install Guide



ELECTRICAL RATINGS:

INPUT: 120VAC, 60HZ

OUTPUT: 24VDC, 1.2A, 28.8W MAX

Supplier's Declaration of Conformity:

47 CFR § 2.1077 Compliance Information

Responsible Party: Feit Electric Company

4901 Gregg Road, Pico Rivera, CA 90660, USA

Unique Identifier: TAPE48/GROW/LED

This device complies with part 15 of the FCC Rules. Operation is subject to the following two conditions: (1) This device may not cause harmful interference, and (2) this device must accept any interference received, including interference that may cause undesired operation. Note: This equipment has been tested and found to comply with the limits for a Class B digital device, pursuant to part 15 of the FCC Rules. These limits are designed to provide reasonable protection against harmful interference in a residential installation. This equipment generates, uses and can radiate radio frequency energy and, if not installed and used in accordance with the instructions, may cause harmful interference to radio communications. However, there is no guarantee that interference will not occur in a particular installation. If this equipment does cause harmful interference to radio or television reception, which can be determined by turning the equipment off and on, the user is encouraged to try to correct the interference by one or more of the following measures: Reorient or relocate the receiving antenna. Increase the separation between the equipment and receiver. Connect the equipment into an outlet on a circuit different from that to which the receiver is connected. Consult the dealer or an experienced radio/TV technician for help. Any changes or modifications not expressly approved by the manufacturer could void the user's authority to operate the equipment. CAN ICES-005 (B).

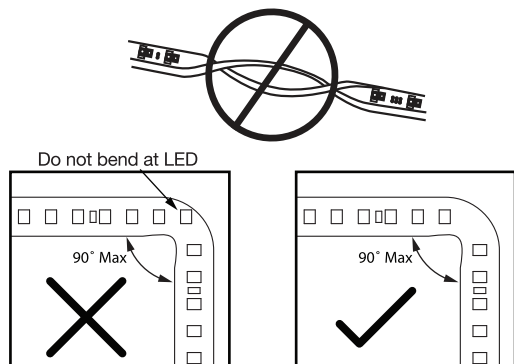
Getting Started:

WARNING:

These products may represent a possible shock or fire hazard if improperly installed or attached in any way. Products should be installed in accordance with this install guide, current electrical codes and/or the current National Electric Code (NEC).

1 Prepare the Grow Light

- Measure the growing area to determine desired grow light length.
- Clean the mounting area thoroughly (surface must be free of dust, dirt or grease).
- Avoid bending the grow light which may damage the LEDs.
- Avoid removing and re-laying the grow light multiple times as the adhesive may wear off.



2 Mount the Grow Light

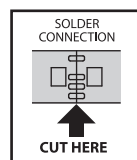
- Unroll grow light and place near mounting location. Ensure power supply and controller can reach to the start of the grow light. Do not connect to power yet.
- Remove adhesive tape from tape brackets and mount in desired location. Space the brackets evenly for best hold.
 - Peel adhesive tape from back of grow light to position and align grow light on mounting surface.



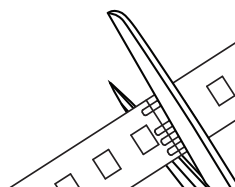
This grow light uses permanent tape and may cause surface damage if removed. Not recommended for mounting on brick or concrete.

Felit Electric is not responsible for damage to mounted surfaces.

- Ensure the power supply is not plugged into the wall outlet when mounting or cutting.
- **Cut grow light to the desired length (cut ONLY on the line or solder connector).** Cutting anywhere other than directly on the line or solder connector will permanently damage the grow light.

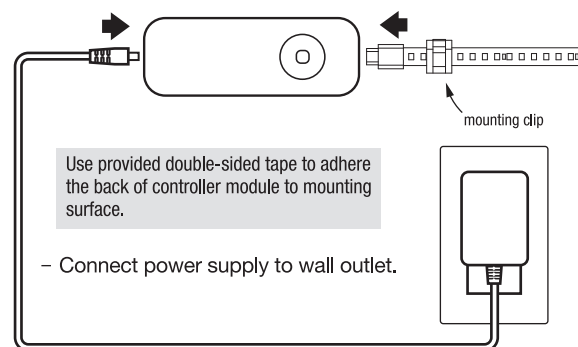


NOTE: Once cut, the portion of the grow light that will not connect to the controller can be disposed of in accordance with local recycling or waste regulations.



3 Connect the Controller Module

Connect the grow light to the controller module then connect the plug as shown in the image below.



4 Using linking cables

- Add the second 4ft grow tape light directly to the primary tape light or use the linking cables.
- Use 6" linkable cable to create two (2) rows of grow lights for twice the grow power.
- Use the 12" linkable cable to connect multiple strips for use on shelves of different heights.

If you are connecting two grow lights, use the included foam tape to secure male connector to mounting surface.



Apply tape to back of male connector



5 How to use the Grow Light

Phase 1: Plants in Seedling Growth Stage

- Recommended colors: Blue and White
- For germinating and seeding, the recommended time is 16 or more hours of light per day.
- The duration of this stage is typically two to three weeks.
- The plants advance to the next phase when a sturdy stem has developed with leaves.

Phase 2: Plants in Vegetative Growth Stage

- Recommended color: White Only
- For vegetative growth, the recommended growth cycle is 18 hours of light per day with 6 hours of darkness with the lights turned off.
- The duration of this stage for most plants is typically four to six weeks.
- This light cycle will create an environment that mimics the photoperiod in the summer with long days.
- It is during this period of vegetative growth that cloning, transplanting, pruning and bending are all initiated.
- During this phase it is important to leave your plants in the dark during the 6 hours that the lights are not on.
- The plants advance to the next phase when pre-flowers start to form.

Phase 3: Plants in Budding and Flowering Growth Stage

- Recommended colors: Red and White
- For Budding and Flowering should be initiated after the pre-flowers have appeared. The recommended time is 12 hours of light per day and 12 hours of darkness with the lights turned off.
- Pre-flowers are the first indication that the plant is ready to move into the budding or flowering stage of growth. You can continue to grow in the vegetative stage or switch to flowering at this point.
- The pre-flowers grow at branch internodes just behind the leaf spur typically around the fourth week of vegetative growth, when the plant is six to eight weeks old. They look like a regular female flower with white fuzzy pistils.

Need Help?



For 24/7 customer support, visit feit.com/help