

IMPORTANT SAFETY INSTRUCTIONS AND INSTALLATION GUIDE

1000 LUMEN LED Rechargeable Mini Tripod Utility Light

IMPORTANT, RETAIN FOR FUTURE REFERENCE: READ CAREFULLY

SAVE THESE INSTRUCTIONS

HOURS OF OPERATION: MONDAY - FRIDAY, 8:00 AM - 5:00 PM (PST), LANGUAGES SPOKEN: ENGLISH, FRENCH AND SPANISH

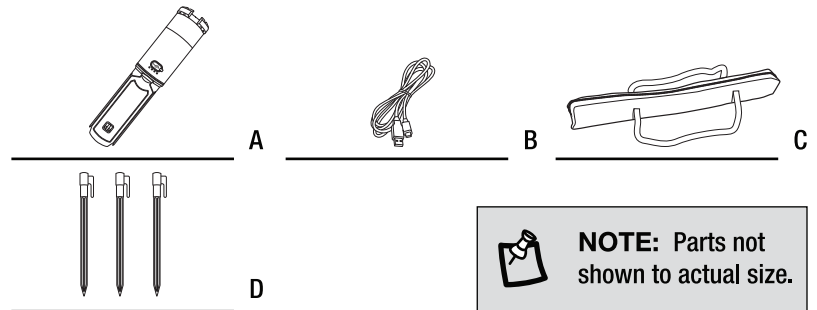
Pre-Assembly

SPECIFICATIONS

CRI	>80
Lumens (in floodlight setting)	High: 1000 Medium: 500 Low: 200
Run Time	High: 4 hr Medium: 8 hrs Low: 16 hrs
Charging Time	5 hrs
Operating Temperature	Charge: 32°F to 113°F (0°C to 45°C) Discharge: -4°F to 113°F (-20°C to 45°C)
Battery	Non-replaceable Li-Ion 7.4V 1800mAh

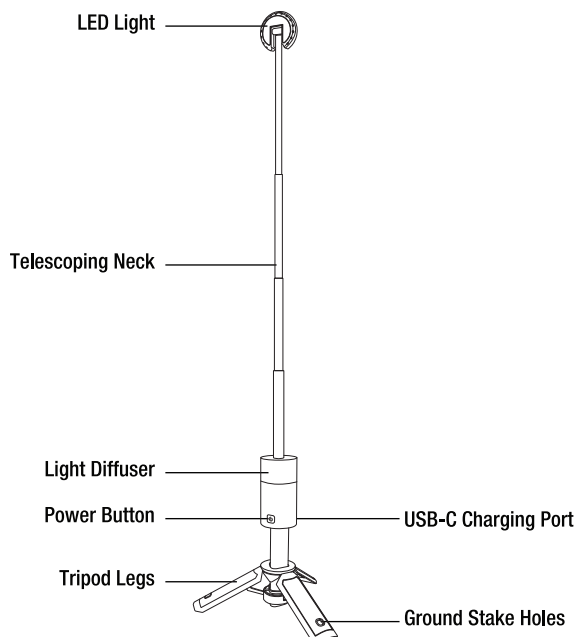
PARTS INCLUDED

Part	Description	Quantity
A	Rechargeable Mini Tripod Utility Light	1
B	USB-C Charging Cable	1
C	Carrying Bag	1
D	Ground Stakes	3



NOTE: Parts not shown to actual size.

Product Overview



Product Dimensions

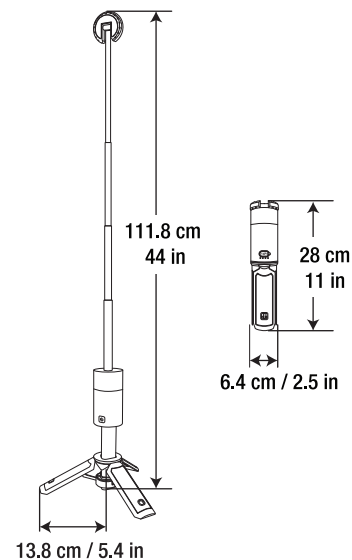


Table of Contents

Safety Information	2
Warranty	2
Pre-Assembly	3
Operating Instructions	4-5

Important Safety Information

READ ALL INSTRUCTIONS

- All Safety and Operating instructions in this manual must be followed before using this product.
- Follow all safeguards stated in the manual, in addition to normal safety precautions in working with electrical devices. Always follow basic safety precautions to reduce the risk of fire, electric shock and personal injury.
- Do not place near any heat source.
- To reduce the risk of electrical shock, do not put in water or other liquid. Do not place or store product where it can fall or be pulled into a tub or sink.
- Do not crush or incinerate.
- Do not insert foreign objects into this product.
- To reduce the risk of fire, keep away from combustible materials while in operation.
- To reduce the risk of injury, close supervision is necessary when this product is used near children.
- Do not attempt to repair, disassemble or modify under any circumstances.
- Do not smother lamp or place it near anything flammable.
- Suitable for Wet Locations
- Do NOT contact hot parts.
- Never look directly into light sources or LED chips. An LED is extremely bright and can damage eyes with prolonged exposure.



WARNING: RISK OF SHOCK. House electric current can cause painful shock or serious injury unless handled properly.



WARNING: Changes or modifications to this unit not expressly approved by the party responsible for compliance could void the user's authority to operate the equipment.



WARNING: When using outdoor use portable luminaires, basic safety precautions should always be followed to reduce the risk of fire, electric shock, and personal injury.

The light source of this luminaire is not replaceable. When the light source reaches its end of life the whole luminaire shall be replaced.

Maintenance and Care

SAVE THESE INSTRUCTIONS

Maintenance of this work light is minimal. Regularly clean the lens with a non-abrasive cleaning cloth. The same care should be provided for the stand.

FCC Statement

Supplier's Declaration of Conformity: 47 CFR § 2.1077 Compliance Information

Responsible Party: Feit Electric Company, 4901 Gregg Road, Pico Rivera, CA 90660, USA

Unique Identifier: WORK000/TRIPOD/BAT

This device complies with part 15 of the FCC Rules. Operation is subject to the following two conditions:

(1) This device may not cause harmful interference, and (2) this device must accept any interference received, including interference that may cause undesired operation. Note: This equipment has been tested and found to comply with the limits for a Class B digital device, pursuant to part 15 of the FCC Rules. These limits are designed to provide reasonable protection against harmful interference in a residential installation. This equipment generates, uses and can radiate radio frequency energy and, if not installed and used in accordance with the instructions, may cause harmful interference to radio communications. However, there is no guarantee that interference will not occur in a particular installation. If this equipment does cause harmful interference to radio or television reception, which can be determined by turning the equipment off and on, the user is encouraged to try to correct the interference by one or more of the following measures: Reorient or relocate the receiving antenna. Increase the separation between the equipment and receiver. Connect the equipment into an outlet on a circuit different from that to which the receiver is connected. Consult the dealer or an experienced radio/TV technician for help. Any changes or modifications not expressly approved by the manufacturer could void the user's authority to operate the equipment. CAN NMB-005 (B).

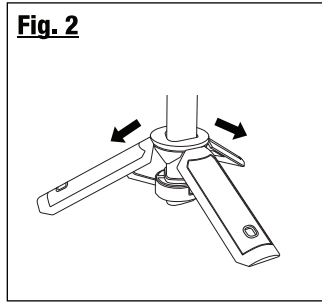
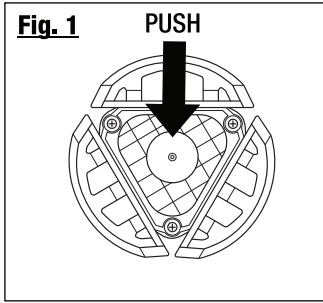
Limited Warranty

This product is warranted to be free from defects in workmanship and materials for up to 1 year from date of purchase. If the product fails within the warranty period, please contact Feit Electric at info@feit.com, visit feit.com/contact-us for instructions on replacement or refund.

REPLACEMENT OR REFUND IS YOUR SOLE REMEDY. EXCEPT TO THE EXTENT PROHIBITED BY APPLICABLE LAW, ANY IMPLIED WARRANTIES ARE LIMITED TO THE DURATION OF THIS WARRANTY. LIABILITY FOR INCIDENTAL OR CONSEQUENTIAL DAMAGES IS HEREBY EXPRESSLY EXCLUDED. Some states and provinces do not allow the exclusion of incidental or consequential damages, so the above limitation or exclusion may not apply to you. This warranty gives you specific legal rights, and you may also have other rights which vary from state to state or province to province.

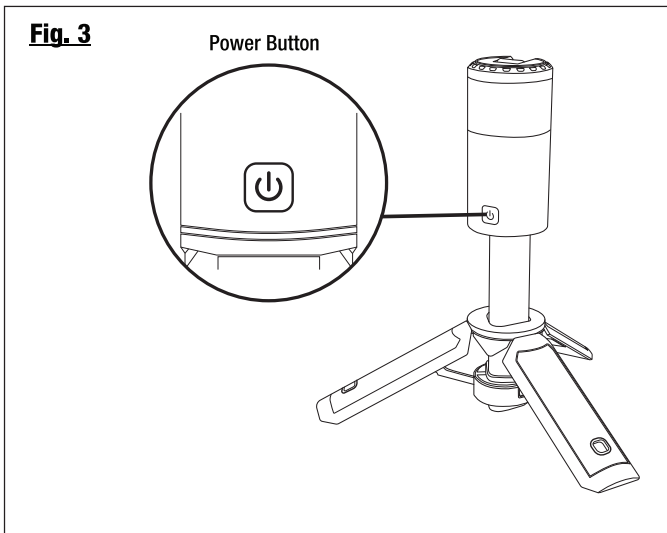
1 Setting up the Tripod

Push the bottom button to extend the tripod (Fig. 1) and open legs (Fig. 2). Place on flat surface.



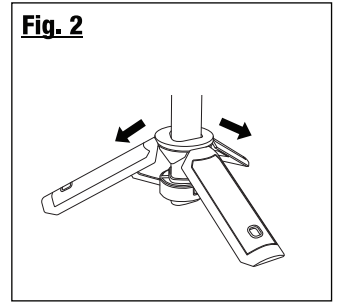
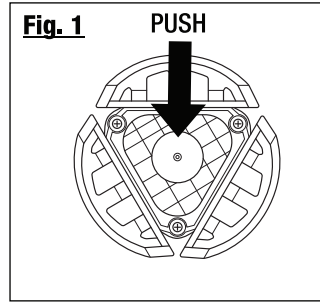
2 Light Modes Settings

Press the power button to cycle through the light modes: High, Medium, Low, and Off. (Fig. 3).



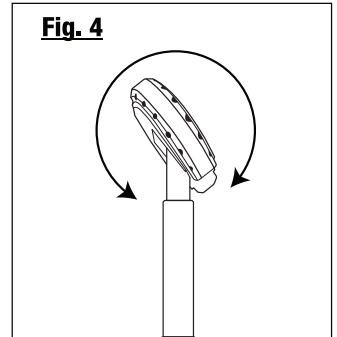
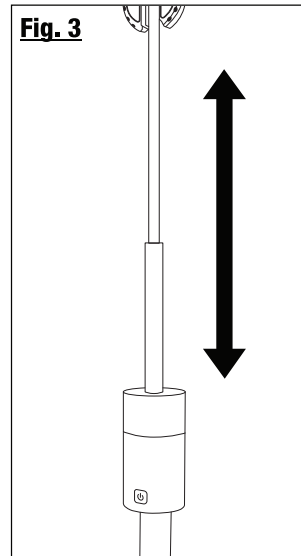
1 Setting up the Tripod

Push the bottom button to extend the tripod (Fig. 1) and open legs (Fig. 2). Place on flat surface.

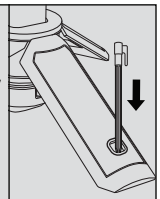


2 Height Adjustment

Pull up the telescoping neck to the desired height (Fig. 3). Place on flat surface and adjust angle of the light to desired position (Fig. 4).

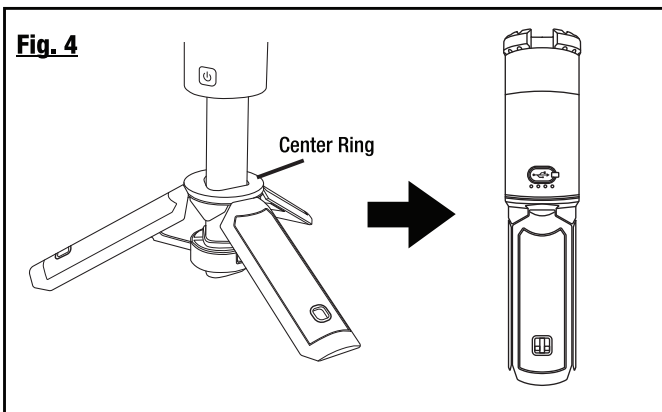


OPTIONAL:
Secure the light to soft ground by using the (3) included ground stakes.



3 Collapsing the Tripod

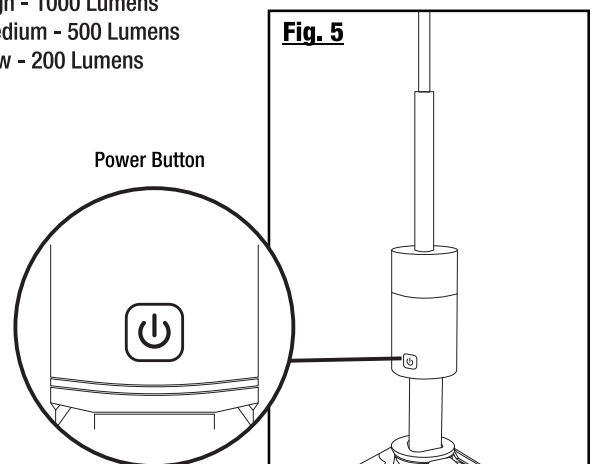
Collapse the tripod by lifting the center ring and pushing in on the legs (Fig. 4). All (3) legs should snap in place to the handle.



3 Light Modes Settings

Press the power button to cycle through the light modes: High, Medium, Low, and Off. (Fig. 5).

- High - 1000 Lumens
- Medium - 500 Lumens
- Low - 200 Lumens
- Off



- 1 Pull up the top light about 2 inches away from the frosted lens on the housing (Fig.1). Flip the top light so it points out. Push the top light back down to rejoin the frosted lens on the housing. (Fig.2).

Fig. 1

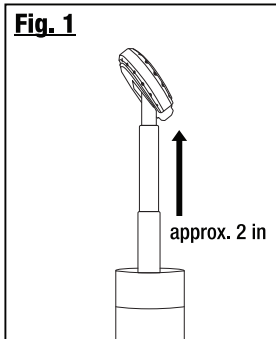
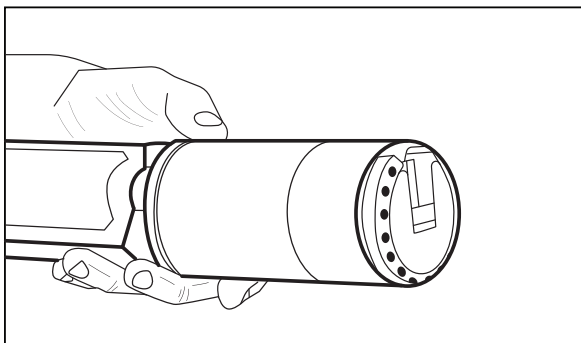
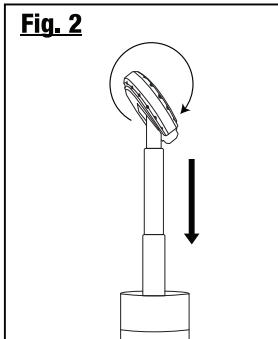
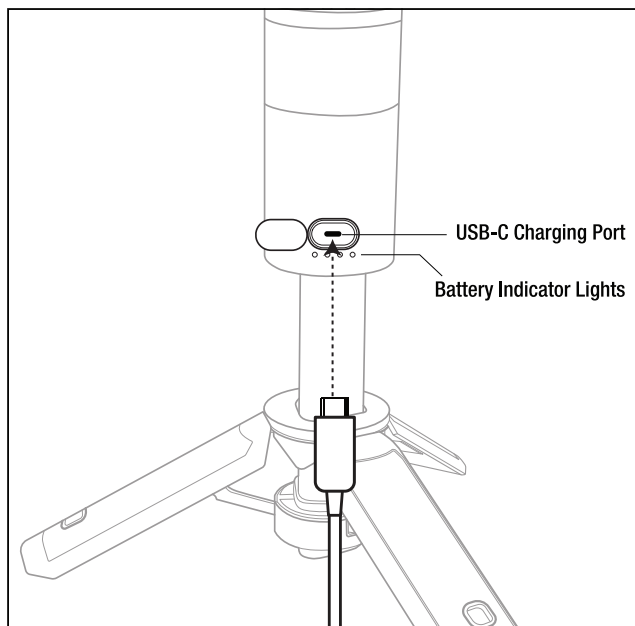


Fig. 2



1 Charging the Unit

Charge the unit with the included type-C charging cable. Battery indicator will show the current charge level.



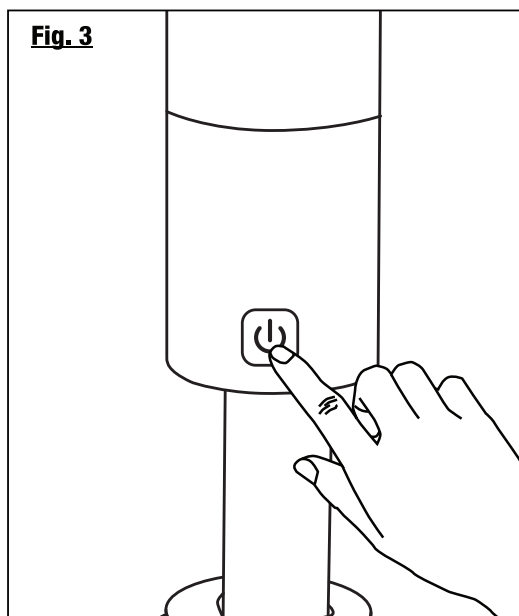
NOTE: Make sure charging port protector is securely closed when not charging to minimize debris and moisture.

2 Light Modes Settings

Press the power button to cycle through the light modes: High, Medium, Low, and Off. (Fig.3).

- High - 1000 Lumens
- Medium - 500 Lumens
- Low - 200 Lumens
- Off

Fig. 3



2 Battery Indicator Lights

Battery indicator lights will blink while charging. All lights will remain lit when plugged in and fully charged.

